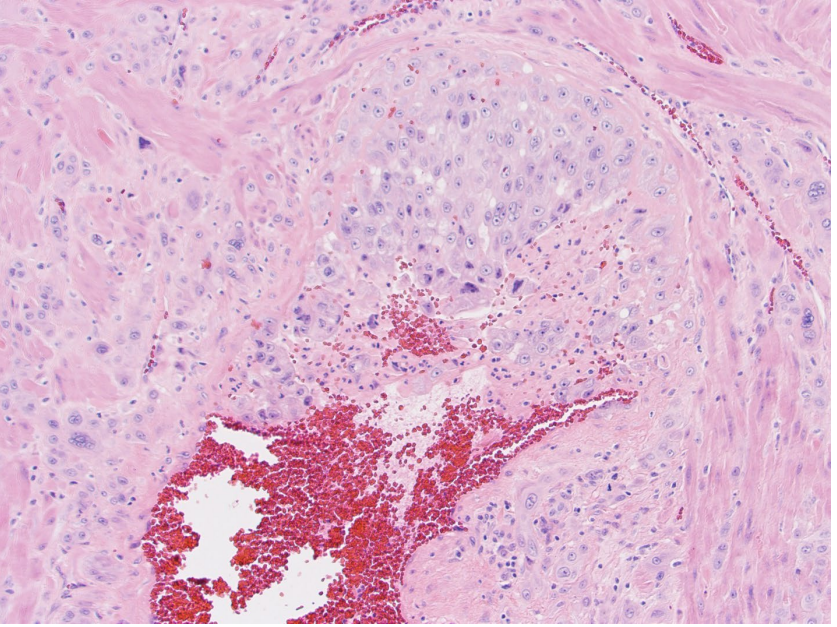
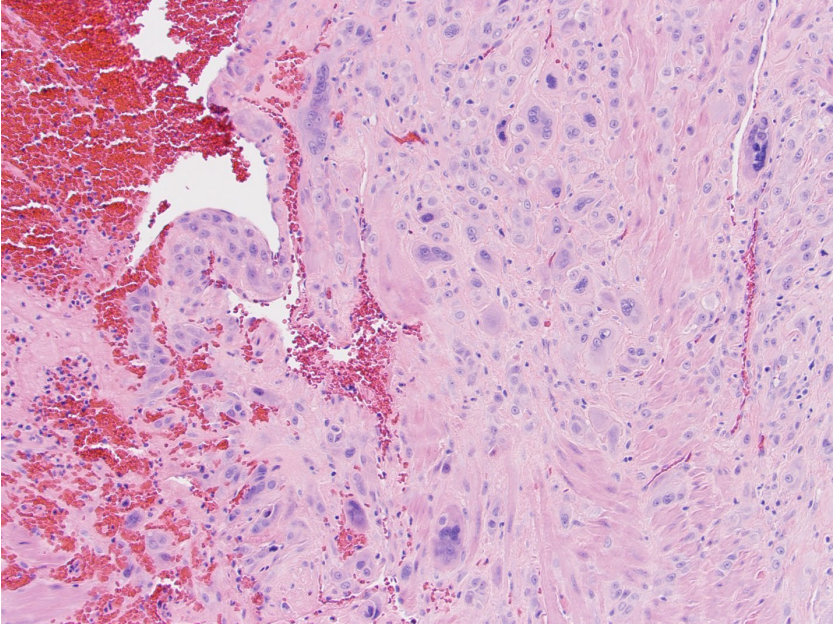
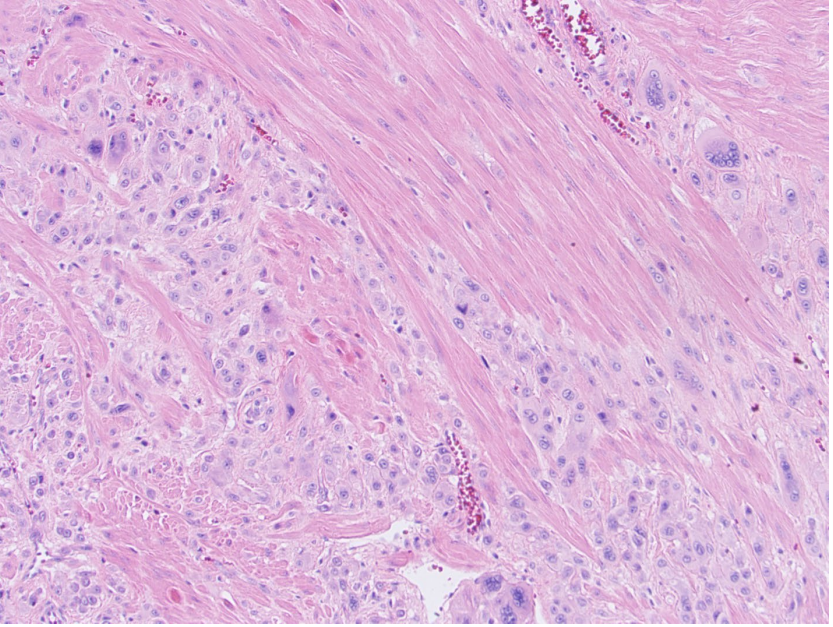
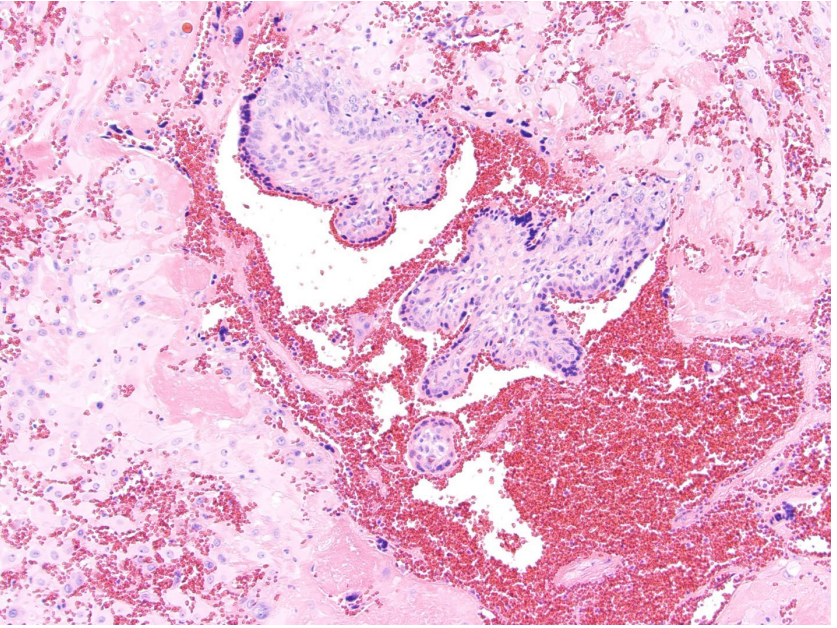
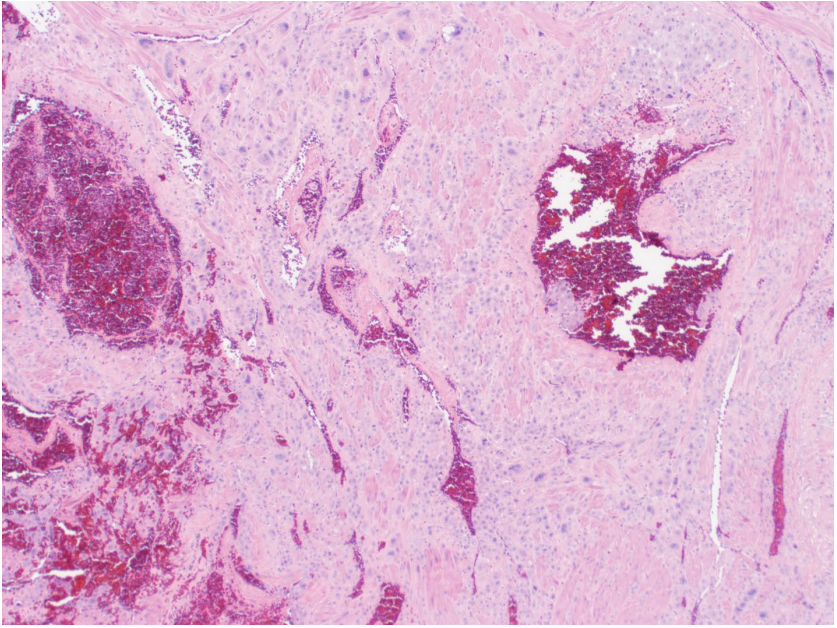
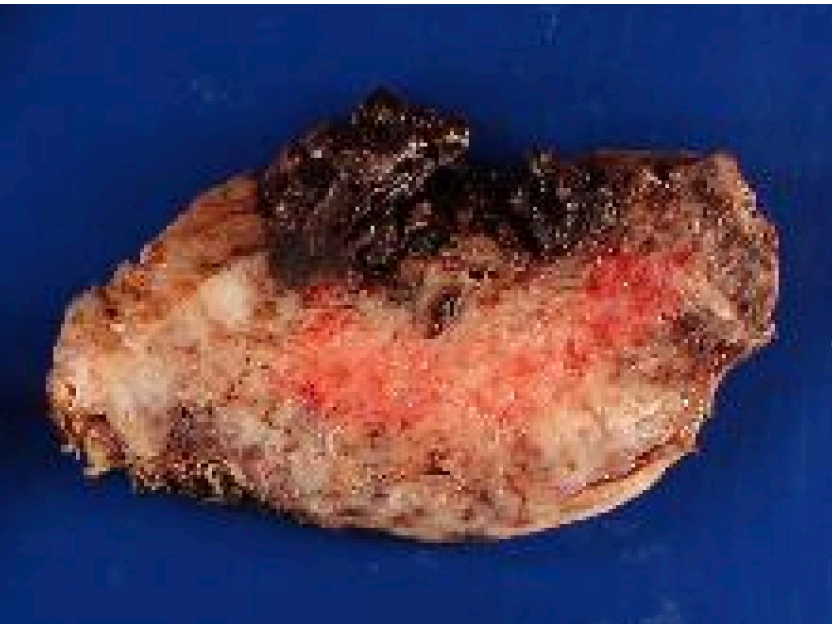
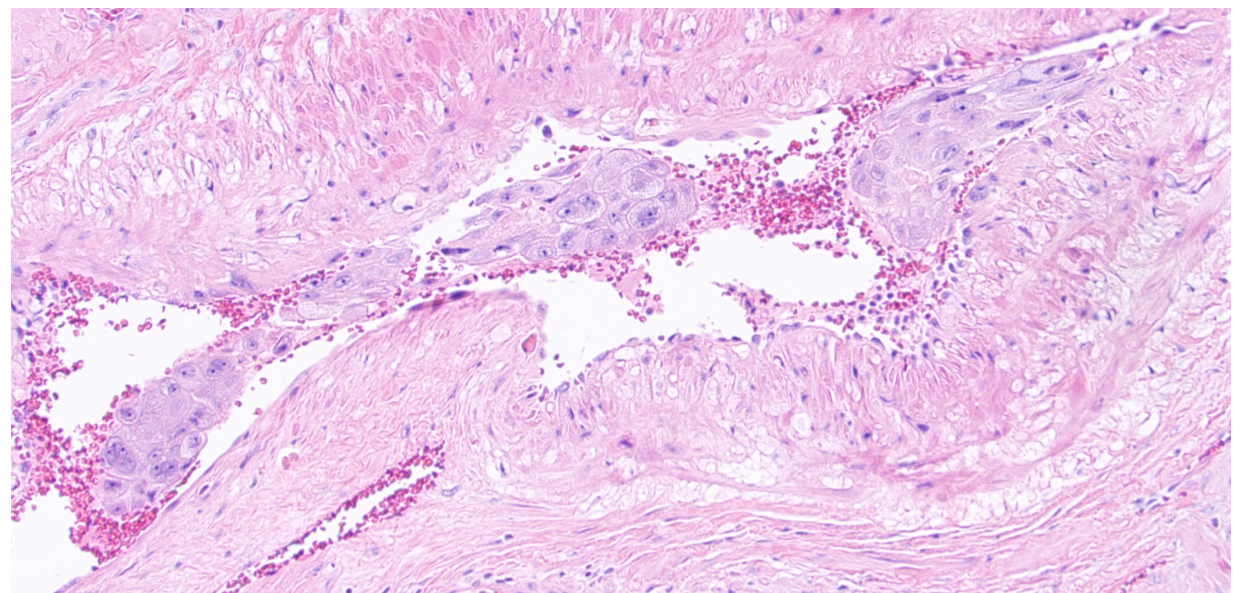
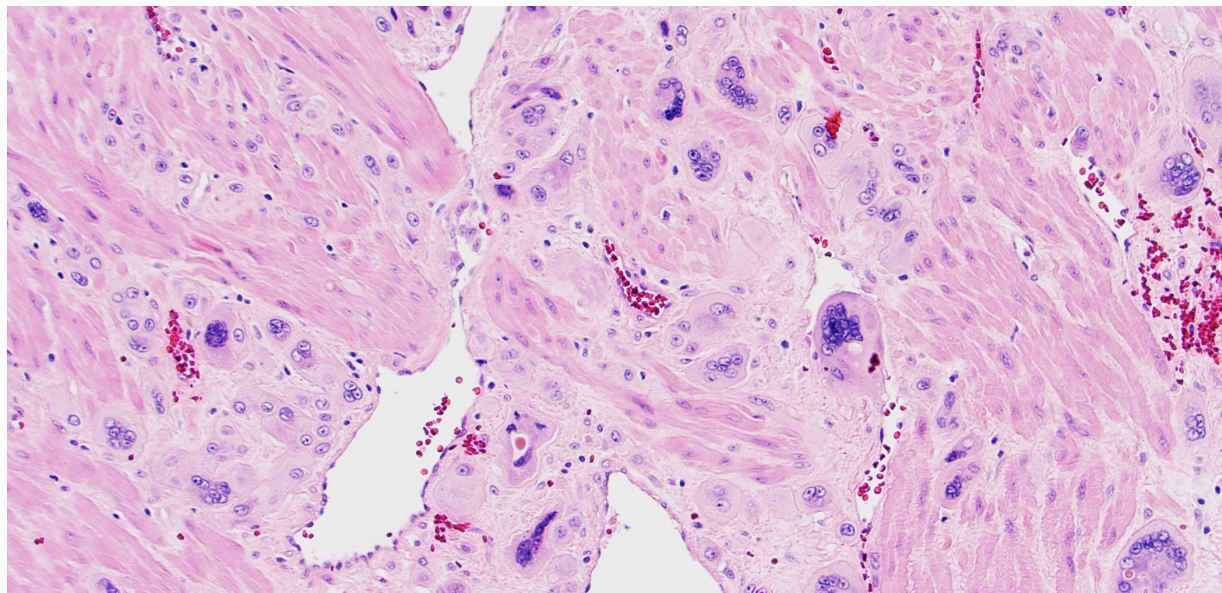
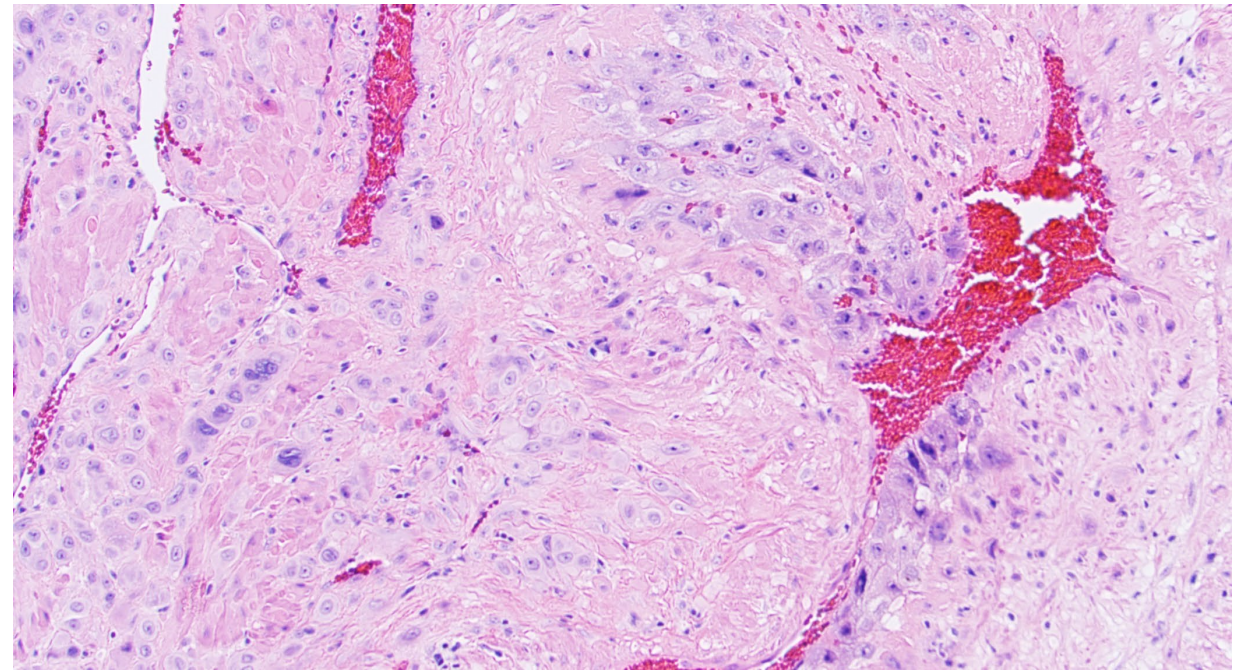
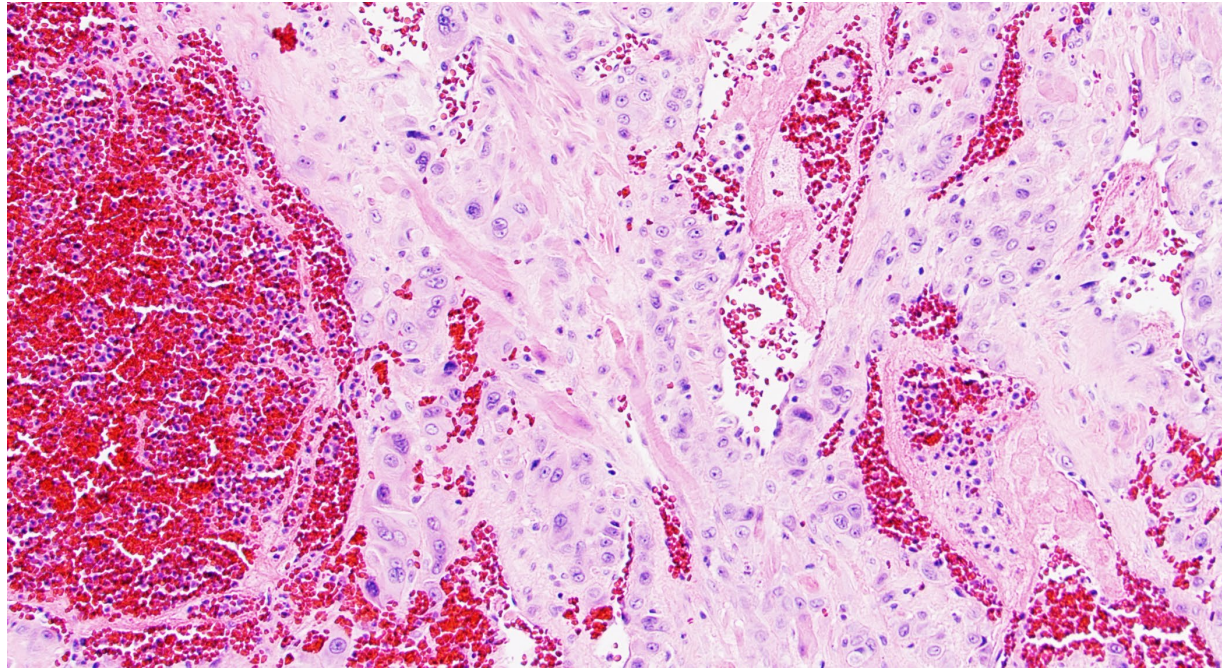




32-year-old woman with vaginal bleeding three weeks after evacuation of a second-trimester placenta underwent hysterectomy for placenta accreta.



- A. Placental site trophoblastic tumor (PSTT)
- B. Implantation site change/exaggerated implantation site
- C. Placental site nodule (PSN)



Sections of the endomyometrium show residual chorionic villi and features of placental accreta. There is exuberant infiltration by cords and singly dispersed implantation site intermediate trophoblasts, accompanied by myometrial vascular invasion, mimicking an invasive neoplasm or placental site trophoblastic tumor (PSTT). However, there is no destructive mass lesion, and the overall myometrial architecture is preserved. Multinucleated trophoblastic cells are relatively evenly distributed throughout the lesion. Exaggerated implantation site (EPS) represents the upper end of implantation site (IS).

Differential Diagnosis of PSTT and Exaggerated Implantation Site (EPS)/Implantation Site (IS)

	EPS/IS	PSTT
Corresponding pregnancy	Term Pregnancy, Complete Hydatidiform Mole	Term Pregnancy
Interval time from index gestation	Concurrent	2 weeks to 17 years (median 12 to 18 months)
Clinical Presentation	Elective termination of pregnancy, missed abortion or CHM	Missed abortion, amenorrhea
Serum hCG (mIU/ml)	Depending on the concurrent gestational event	<1x10 ³
Gross Appearance	Microscopic and non-destructive	Expansile to infiltrative solid mass lesion
Location	Corpus	Corpus
Lesional Border	Infiltrative	Infiltrative
Growth Pattern	Single cell, cords to small nests Lesional cells replacing venous wall Lesional cells splitting existing myometrial smooth muscle fibers Evenly distributed multinucleated lesional cells	Sheets and nests Tumor cells replacing venous wall Tumor cells splitting myometrial smooth muscle fibers at tumor periphery Scattered, irregularly distributed multinucleated tumor cells
Lesional Cells	Implantation site intermediate trophoblast	Implantation site type intermediate trophoblast
Ki-67 Labeling Index	< 5% (<10% in CHM)	5-30%

Final Diagnosis: Implantation site/exaggerated implantation site associated with placenta accreta