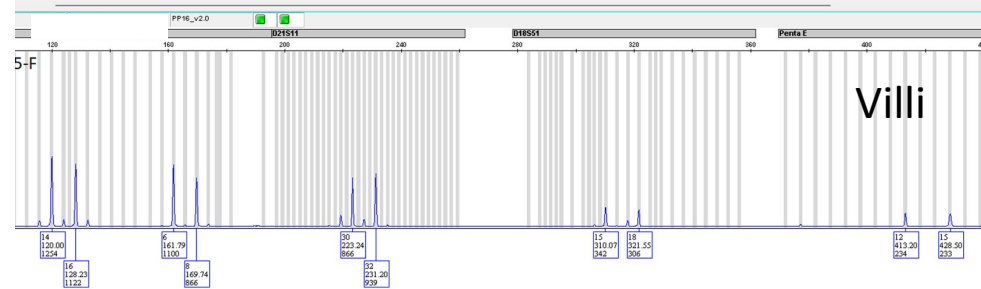
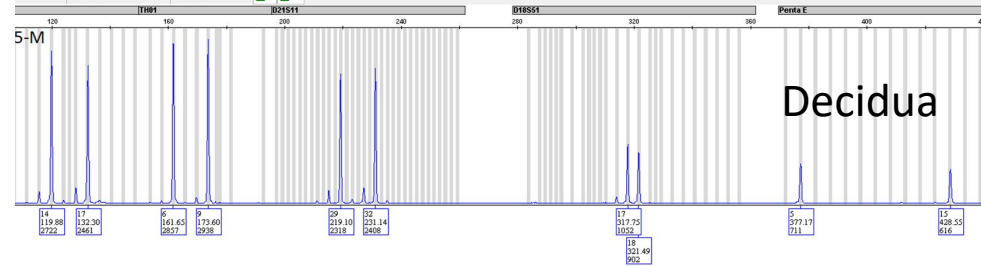
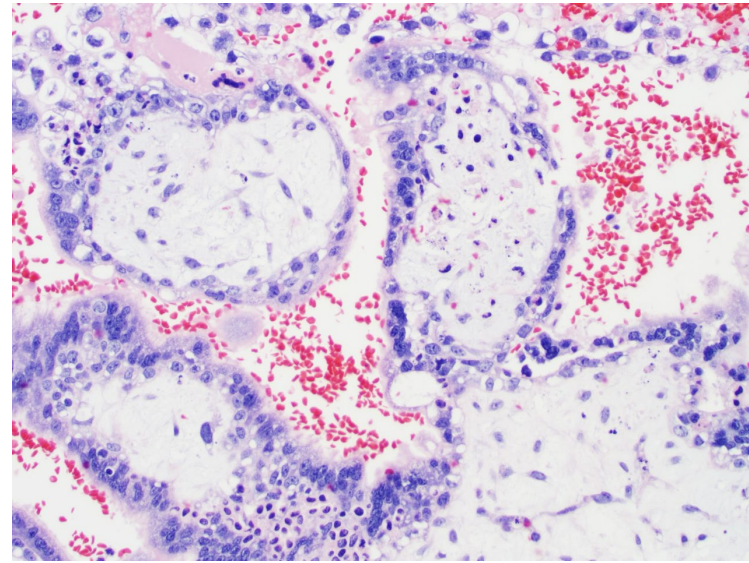
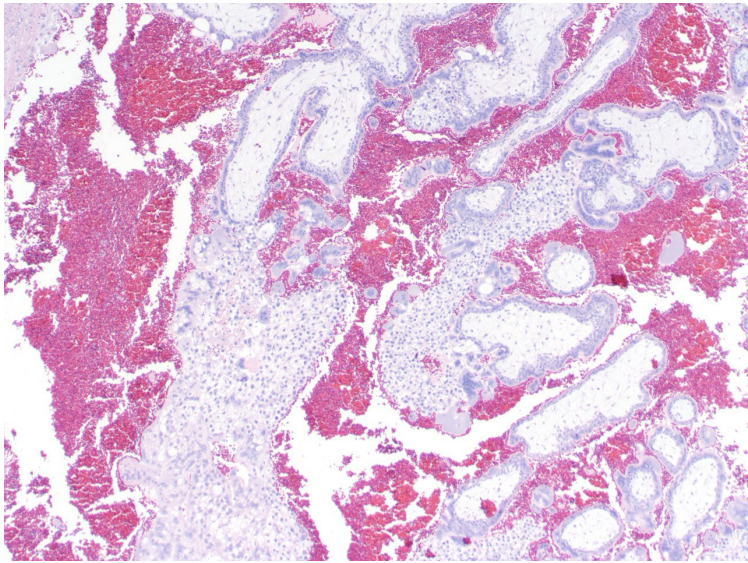
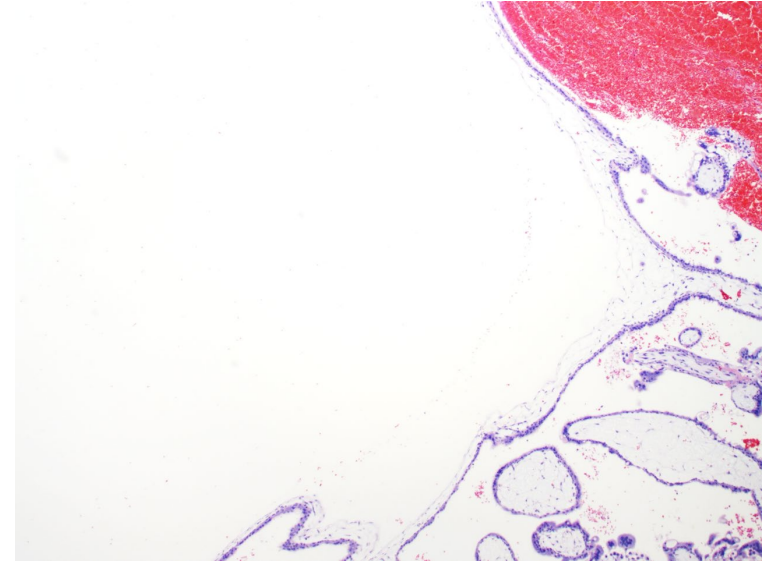
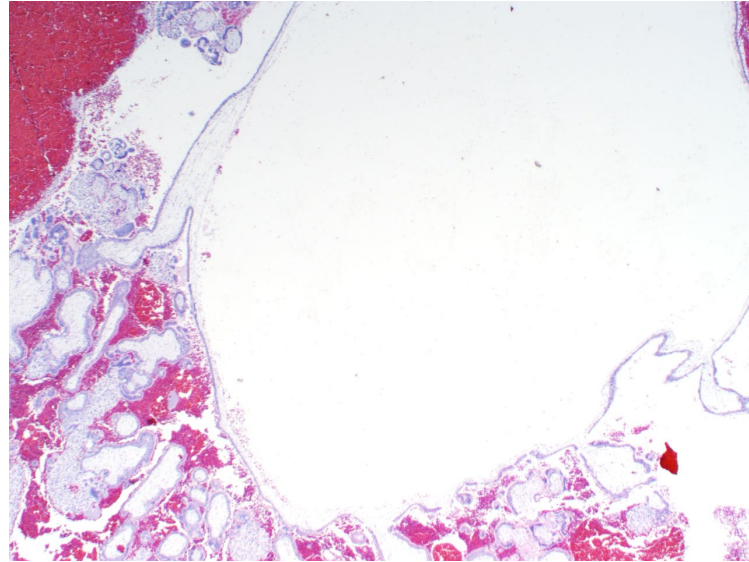
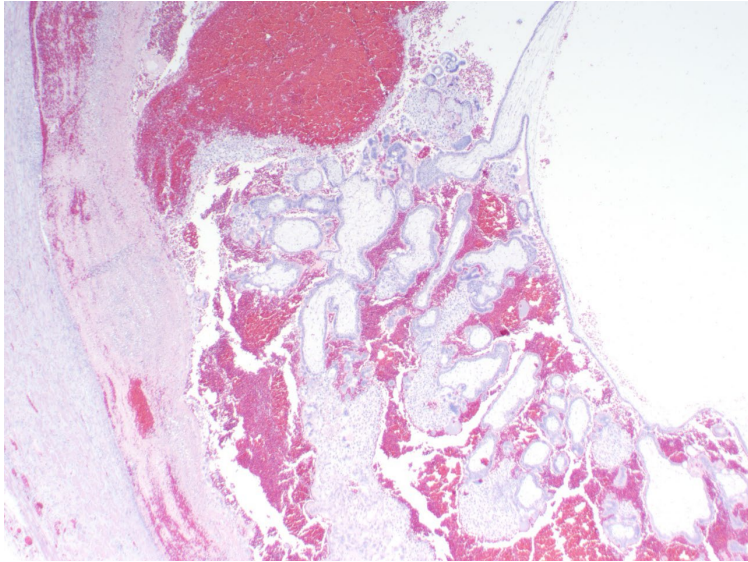




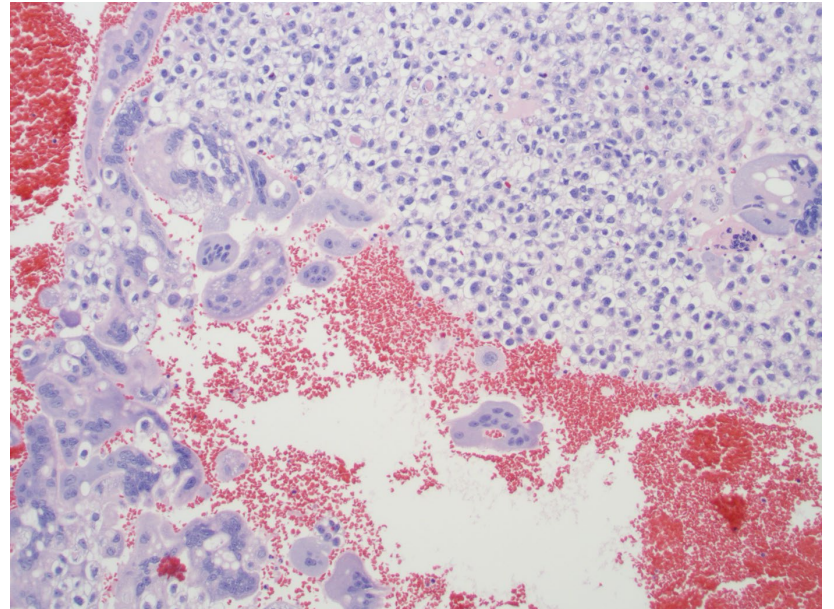
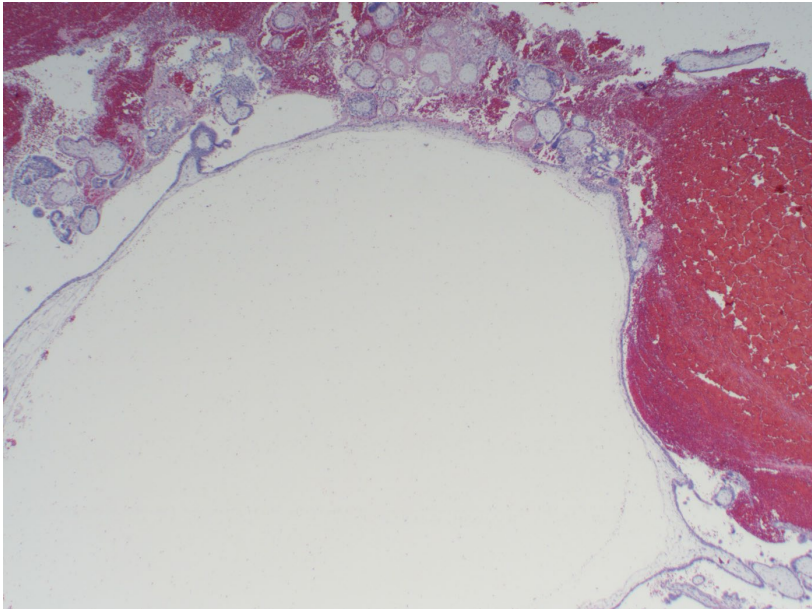
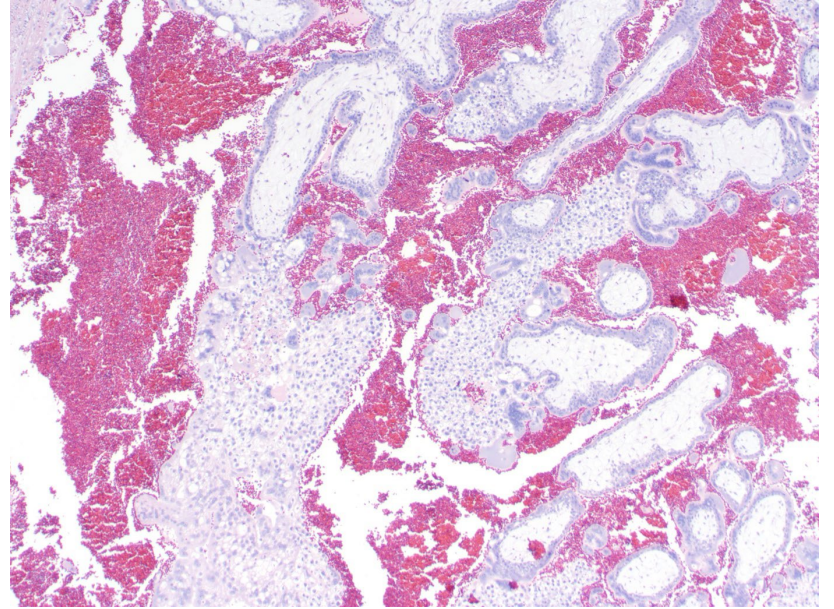
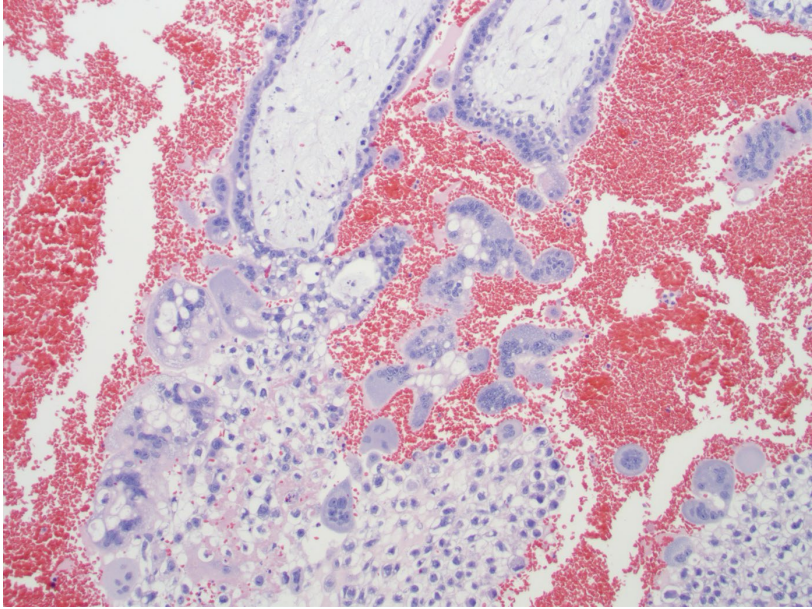
Case Presentation

A 38-year-old woman presented with tubal pregnancy. Specimen was sent for consultation to rule out hydatidiform mole. Immunohistochemical staining demonstrated normal p57 expression in the villous cytotrophoblasts and stromal cells. STR analysis showed a balanced biparental genetic profile.



Differential diagnoses

- A. Tubal CHM
- B. Tube PHM
- C. Tubal Non-molar Gestation



Final Diagnosis: Tubal non-molar gestation with dilated gestational sac simulating partial mole

Discussion

Tubal pregnancies are frequently terminated at an early gestational age, and the chorionic villi may exhibit irregular contours, hydropic change, and prominent trophoblastic hyperplasia involving both the intervillous spaces and the implantation site. In this case, the central gestational sac simulates a markedly hydropic villus with cistern formation. Notably, there are smaller non-hydropic villi with polarized villous intermediate trophoblastic proliferation surrounding the gestational sac. A balanced biparental STR profile confirms the diagnosis of a non-molar tubal gestation.