

YALE PATHOLOGY LABS
2026 CALENDAR

Letter from the Chair



The mission of Yale Pathology continues to focus on innovation, collaboration, and delivering outstanding patient care. Our robust research, teaching programs, and exceptional clinical patient care enable us to diligently pursue the goal of bringing new knowledge and innovative diagnostic and therapeutic approaches to medicine.

Our clinical practice thrived in 2025 with the support of our reference services team. The Troplex™ quantitative assay that Yale Pathology Labs (YPL) introduced in late 2024 received New York State Department of Health approval in early 2025, ensuring its accuracy and reliability. The assay, developed in the lab of David Rimm, MD, PhD, uses novel technology to quantitatively measure two breast cancer biomarkers – HER2 and TROP2 – both of which are targets for antibody drug conjugate (ADC) therapies in patients with advanced/metastatic breast cancer. This allows selection of the best treatment based on a quantitative score.

Yale Pathology launched its Advanced Diagnostic Tests Laboratory, led by Kurt Schalper, MD, PhD, a unit of Yale Pathology Labs that provides access to novel diagnostics tests. The lab performs and interprets clinical-grade high-quality molecular tests on human-tissue samples.

Also this year, Yale Pathology Labs, in collaboration with Yale New Haven Health, initiated a migration to the Epic Beaker Laboratory information system, which will improve efficiency, standardization, and alignment by enabling access to a patient's entire medical record throughout the health system, in one place.

In other developments:

- An AI tool developed by Joanna Gibson, MD, PhD, Peter Gershkovich, MD, MHA, and Senior Software Developer Joseph Celano, and run on a pilot basis at YPL, is being used to check a final pathology report against a patient's complete medical record to ensure accuracy.
- YPL continued to strengthen relationships with our community partners. This included a presence at the New Haven Juneteenth celebration and working with Yale Otolaryngology in offering free head & neck cancer screenings at the annual Beverly Levy Walk and Block Party in Orange.
- The digitalization of pathology and potential AI applications continued under the direction of David Klimstra, MD, and Sudhir Perincheri, MBBS, PhD, director of Digital Pathology.
- YPL continued with its annual celebration each March of National Medical Laboratory Professionals Week, recognizing the vital contributions of our laboratory staff and the key role they play in the healthcare system.
- Two of our most successful laboratories at Yale Pathology celebrated milestones as the Katerina Politi Lab marked 15 years and the David Rimm Lab marked 30 years of research and innovation.
- David Klimstra, MD, was appointed director of Yale Pathology Personal Consultation Service, providing custom medical advice, diagnosis, and treatment. It joins Yale Pathology Expert Consultation Service, which provides YPL's expert evaluations in a variety of subspecialties under the direction of Mina Xu, MD.

Our well-established Molecular Diagnostics and Tumor Genotyping evaluations use next generation sequencing (NGS)-based assays to guide therapeutic decisions in many solid

tumors, and our gynecologic pathology team, led by Hui Pei, MD, PhD, offers expert molecular genotyping test for molar gestations.

We continue to provide FDA-approved PDL-1 testing, a key diagnostic for personalizing immunotherapy for patients diagnosed with cancer, and expand this capability as it is applied to a wider variety of tumors. We have also expanded our evaluation methodologies for the detection of microsatellite instability (MSI) to tumors found beyond the gastrointestinal tract. This testing often allows physicians to select more effective therapies for their patients. And along with Yale Medicine and Yale New Haven Health, we are refining the reporting options for pathology and laboratory results within Epic®. Clients using Epic® can receive their pathology reports through Epic® as well as through RELAY, our own web-based reporting tool.

These advances and a robust focus on quality and patient safety carry on our long Yale tradition of introducing leading technologies and scientific discoveries to benefit patient care. Yale Pathology has many "firsts" to its credit. Our pathologists continue to thrive at the intersection of basic science and clinical care and are making exciting discoveries in cancer biology, epigenetics, computational pathology, digital pathology, and the biology/pathology of aging.

In November, we again held our Annual Pathology Day in partnership with Yale Pathways to Science. Public school students were invited to spend the day exploring different rotations, including autopsy and cytology, and learning to take samples, how blood smears are made, and how cancer cells grow in the laboratory. The annual event exposes students to careers in pathology and shows the variety of positions and career paths pathology offers.

Over the last year, Yale Pathology welcomed new faculty members, and applauded the accomplishments of our scientists and physicians, many of whom presented nationally and internationally and were recognized among Connecticut's Top Doctors, while others played a pivotal role in the Connecticut Society of Pathologists.

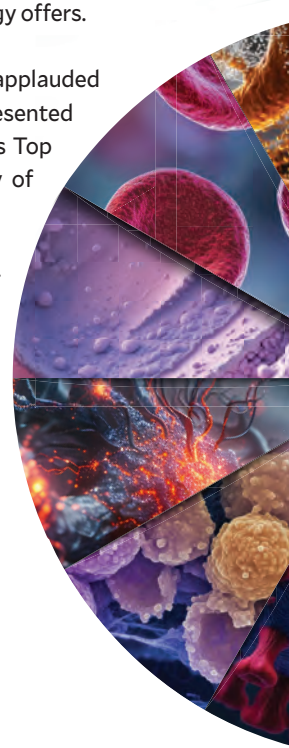
The importance of the work done at Yale Pathology cannot be overstated. Our consultative practices are available to all regardless of location through our robust expert consultation and reference programs, which are specifically designed to serve physicians and their offices. Details of how to access the services of Yale Pathology Labs are presented herein.

Sincerely,

Chen Liu, MD, PhD

Anthony N. Brady Professor of Pathology
Chair, Department of Pathology
Yale School of Medicine
Chief of Pathology, Yale New Haven Hospital

Yale SCHOOL OF MEDICINE
Department of Pathology



Reference Services



Yale Pathology Labs understand that test results are integral to the daily routine of your practice. From diagnosing patients to selecting treatments, your lab service affects every patient. When you choose Yale Pathology Labs as your service provider, you choose the latest technology, outstanding customer service, and a team of premier pathologists.

Reference customer service representatives are available between 8 am and 5 pm EST, Monday through Friday. Our knowledgeable and efficient staff is ready to assist with questions about ordering, billing, shipping, and reports. Our service team will thoroughly address your needs, concerns, or questions and can be reached at **877-YALE LAB (877-925-3522)** and by email at yalepathologylabs@yale.edu.

FINAL REPORTS

For most locations, patient final reports are delivered to your practice by our courier, Lab Logistics. Patient reports are also available for physicians to access immediately via the Yale New Haven Health System **Epic**® interface or through our secure web-based software solution, **RELAY** (Remote Electronic Labs at Yale). For information about access to **RELAY**, please contact our customer service team.

Consultation Services



EXPERT CONSULTATION PRACTICE

Yale Pathology Labs strive to provide both prompt and timely diagnoses and specialized studies applicable to specific diseases. The expertise of our pathology subspecialists and the diversity of surgical specimens submitted for evaluation also provide an excellent environment for research and training. Consultations and requests for second opinions are welcome. Requests from physicians seeking second opinion/expert consultation, please follow visit <https://medicine.yale.edu/pathology/ypl/consultservice/>, download and complete the Expert Consultation Request Form, and return it to Yale Pathology Case Management at path-casemanagement@mailman.yale.edu.

If you are a patient at another hospital or a physician and you would like to have pathology slides sent to Yale Pathology for an upcoming appointment or for a second opinion, please send slides along with the final report to:

Yale Surgical Pathology
Medical School Receiving
200 South Frontage Road
Surgical Pathology EP2-631
New Haven, CT 06510

Please contact our service team at **877-YALE LAB (877-925-3522)** for detailed information about how to send specimens and other material necessary for consultation on an individual patient's case.

QUALITY ASSURANCE INITIATIVE

Yale Pathology Labs provide quality patient care in an effective, efficient, and timely manner. We maintain extensive quality assurance and improvement programs consisting of a formal, multifaceted, and systematic approach for measuring and enhancing patient safety and improving the nature of patient care. In addition to satisfying all accreditation and licensing requirements, our quality assurance programs go well beyond the minimum as a leader in quality improvement (QI) and quality monitoring methodologies.

FOLLOW-UP SERVICES AVAILABLE FROM OUR CYTOLOGY LABORATORY

- **Annual patient reminder letters**
- **6-month no follow-up reminders**
- **Normal Pap result letters**
- **Monthly reports customized to the needs of your practice**

PARTICIPATION IN MANAGED CARE PLANS

Yale Pathology Labs accept most health insurance plans. For a complete list of managed care health plans in which we participate, please visit Yale Medicine's website at yalemedicine.org/patient-tools/insurance.

BILLING

Yale Pathology Labs will bill the insurance company or financially responsible party directly, per the requisition form that accompanies each specimen submitted to our lab. Please note that patients are responsible for any co-payments, deductibles, or co-insurance under their plan.

TRANSPORT FOR SPECIMENS

In our primary service area, Lab Logistics is our dedicated courier service for all routine or STAT laboratory specimen pick-ups. Lab Logistics also handles supply orders and deliveries. Please contact them directly for a specimen pick-up and for supplies, at: **Tel: 833-215-7628 Fax: 888-370-5356**

If you are outside of our courier service area, whether in-state, nationally, or globally, your practice can submit specimens through our pre-paid FedEx service. Contact customer service for more information.

Yale Pathology Labs



Angelique W. Levi, MD
*Vice Chair, Clinical Operations
& Reference Services*
angelique.levi@yale.edu



Kevin Schofield, BS, CT(ASCP)
*Director, Reference Services
Clinical Operations*
kevin.schofield@yale.edu



Stephanie Weirsmann
*Director, Reference Services
Business Development*
stephanie.weirsmann@yale.edu

SERVING ALL CONNECTICUT COUNTIES

BRIDGEPORT SURGICAL PATHOLOGY & LABORATORY MEDICINE FACULTY

Christine Minerowicz, MD

*Assistant Professor of Pathology
Chair, Bridgeport Hospital Pathology
CLIA Medical Director – Bridgeport & Milford Hospital Laboratories*

Paul Jay Cohen, MD

*Associate Professor of Clinical Pathology
Director, Surgical Pathology, Bridgeport Hospital Pathology*

Sumi Thomas, MBBS

*Assistant Professor of Pathology
Director, Bridgeport Surgical Pathology Fellowship Program Site Director, Yale Pathology Residency Program at Bridgeport Hospital*

Peter Podany, MD

*Assistant Professor of Pathology
Yuanxin Liang, MD, PhD
Assistant Professor of Pathology*

Mingfu Yu, MD, MS

Assistant Professor of Pathology

Edward Snyder, MD

*Professor of Laboratory Medicine
Director, Transfusion Medicine - Bridgeport & Milford Hospital Laboratories*

Nalan Yurtsever, MD

*Assistant Professor of Laboratory Medicine
Director, Laboratory Medicine - Bridgeport & Milford Hospital Laboratories*

SAINT RAPHAEL CAMPUS FACULTY

Mingfu Yu, MD, MS

Assistant Professor of Pathology

QDAP CAP/CLIA Laboratory

The Yale QDAP (Quantitative Diagnostics in Anatomic Pathology) Laboratory is a CAP/CLIA-certified laboratory that develops and offers next generation immunohistochemistry.

Pathology labs have long provided quantitative data in Laboratory Medicine or Clinical Pathology labs where Hematology and Chemistry values are provided to clinicians in mg/dl or similar quantitative values expressed as a concentration with a standardized value and range. However, Anatomic Pathology has historically provided only subjective readings due to the technical challenges of measuring protein concentrations within tissue sections.

Modern technology and computational power have allowed for fully quantitative, standardized measurement of biomarker expression in tissue expressed in attomole/mm²

The QDAP laboratory now offers the Troplex™ assay for quantitative HER2 and TROP2 on the same tissue sample to assist in therapeutic selection. Assays for PD-L1, HER3 and CD8 are expected to be validated in the near future.

OUR TEAM

David Rimm, MD, PhD, Director, QDAP
Nay Nwe Nyein Chan, PhD, Technical Director
Julia Benanto, Technical Assistant

Yale Autopsy Service

The Yale Autopsy Service performs autopsies seven days a week for the York Street Campus, Saint Raphael Campus, Bridgeport Hospital, and the West Haven VA Hospital. Autopsies on patients from the Yale system are usually performed at no cost to the family. The autopsy service is involved in the Pathology Department's educational, quality assurance, and teaching missions, and we collaborate with researchers through the Yale Legacy Tissue Donation Program and multiple tissue banks. We also provide morgue services for all patients who pass away at Yale New Haven Hospital. The morgue is responsible for processing paperwork for all deceased patients including death certificates and autopsy consents.

OUR TEAM

Susan F. Ely, MD, MPHTM, Director
Raffaella Morotti, MD, Associate Director
Amanda Masters, MHS, PA (ASCP), Autopsy and Morgue Manager

Molecular Diagnostic Pathology



Advances in molecular and cell biology have revolutionized our understanding of disease mechanisms at the molecular and genetic levels, transforming these insights into powerful diagnostic, prognostic, and therapeutic tools in modern medicine. Molecular genetic alterations not only serve as unique signatures for specific diseases but also provide essential biomarkers for targeted therapies. Over the past decades, diagnostic pathology has evolved from purely morphological assessment to an integrated discipline combining histology, immunohistochemistry, and cutting-edge molecular analysis. Yale Pathology's Molecular Diagnostics Program is at the forefront of this transformation—rapidly translating new scientific discoveries and innovative technologies into clinically impactful tests.

Our laboratory offers a broad spectrum of molecular assays on routine pathology specimens, including hotspot mutation analyses, microsatellite instability testing, STR genotyping, and fluorescent in-situ hybridization (FISH) for chromosomal rearrangements and gene amplifications. In recent years, we have expanded to advanced platforms for comprehensive next-generation sequencing (NGS) and rapid solid tumor profiling, delivering precise, clinically relevant interpretations that guide personalized cancer care at Smilow Cancer Hospital. With state-of-the-art capabilities and expert molecular pathologists, Yale Pathology continues to set the standard in delivering molecular “fingerprints” of disease and accurate predictions of therapeutic response—advancing precision medicine for every patient we serve.

Clinical Tests Provided by Molecular Diagnostics Lab

Diagnostic PCR Tests

- BRAF mutation
- FOXL2 mutation
- KRAS mutation
- T and B cell rearrangement
- STR DNA genotyping (gestational trophoblastic disease and tissue identity testing)
- MLH1 promoter methylation
- MSI analysis
- Mycobacterium Tuberculosis

PCR Based Companion Diagnostic Tests

- BRAF mutation
- KRAS mutation
- MGMT promoter methylation



Left: Yale Pathology Labs continued to do community outreach in 2025. Stephanie Weirsman, Director, Reference Services Business Development, at the New Haven Juneteenth celebration.



Below: Yale Pathology, Yale Pathology Labs (YPL), and Yale Otolaryngology (ENT) offered free head and neck cancer screenings at the Beverly Levy Walk and Block Party in Orange.

Diagnostic FISH tests

- BCL1 rearrangement (lymphomas)
- BCL2 rearrangement (lymphomas)
- BCL6 rearrangement (lymphomas)
- EWS rearrangement (soft tissue tumors)
- SYT rearrangement (synovial sarcoma)
- TFE3 rearrangement of renal tumors
- UroVysion (urothelial carcinoma)
- MYC rearrangement (lymphomas)
- MDM2 amplification (liposarcomas)
- Chromosome 1p/19q deletion (oligodendroglioma)
- CDNK2A (mesothelioma and gliomas)

FISH Companion Diagnostic Tests

- EGFR gene amplification
- HER2 amplification

Next-generation Sequencing Tests

- Yale ThyroSure NGS Analysis (thyroid FNA specimen)
- ArcherDx Fusion Gene Panel (various solid tumors and lymphomas)
- Y-GTD Maternal Effect Gene Panel (Familial Recurrent Hydatidiform Moles)
- Yale Endometrial Cancer Panel (Molecular Classification of Endometrial Cancers)

OUR TEAM

Pei Hui, MD, PhD, Director
Sanja Dacic, MD, PhD
Mohamed Kahila, MBCh
Krasimira A. Rozenova, MD, PhD

Clinical Faculty



Rita Abi-Raad, MD, Associate Professor of Pathology; Associate Residency Program Director, Pathology. Clinical interests: cytopathology, gynecologic pathology.



Adebowale Adeniran, MD, Professor of Pathology; Director of Cytopathology; Director, Cytology Laboratory; Director, Cytopathology Fellowship Program, Pathology; Director, Anatomic Pathology Elective Program, Pathology. Clinical interests: oncologic pathology, urologic pathology, cytopathology.



Sarah Aitken, MBChB, PhD, FRCPath, Assistant Professor of Pathology. Clinical interests: gastrointestinal and liver pathology; molecular pathology; genomic pathology; digital pathology.



Rebecca Baldassarri, MD, Assistant Professor of Pathology. Clinical interests: cytopathology, gynecologic pathology.



Andrea Barbieri, MD, Associate Professor of Pathology; Residency Program Director, Pathology. Clinical interests: gastrointestinal pathology, endocrine head and neck pathology.



Marcus W. Bosenberg, MD, PhD, Anthony N. Brady Professor of Dermatology, Pathology and Immunobiology; Director, Yale SPORC in Skin Cancer; Director, Yale Center for Immuno-Oncology; Co-Leader, Cancer Immunology, Yale Cancer Center. Clinical interests: melanocytic neoplasms, soft tissue tumors, cutaneous lymphoma.



Demetrios T. Braddock, MD, PhD, Professor of Pathology. Clinical interests: urologic pathology, hematopathology, disorders of bone metabolism.



Natalia Buza, MD, Professor of Pathology; Director, Pathology Center of Excellence for Women's Health, Anatomic Pathology; Director, Gynecologic Pathology Fellowship Program, Anatomic Pathology; Director, Women's Health Pathology Fellowship Program, Pathology. Clinical interest: gynecologic pathology.



Guoping Cai, MD, MS, Professor of Pathology; Associate Director of Cytopathology, Pathology. Clinical interests: fine needle aspiration (FNA), cytopathology, urologic pathology, thoracic pathology.



Jocelyn Chandler, MD, Assistant Professor. Clinical interests: cytopathology, hematopathology.



Paul Jay Cohen, MD, Associate Professor of Pathology; Chair, Bridgeport Hospital Pathology; Site Director, Yale Pathology Residency Program at Bridgeport Hospital. Clinical interests: general surgical pathology, thoracic pathology, gynecologic pathology.



Lorraine Colón-Cartagena, MD, Assistant Professor of Pathology. Clinical interests: oncologic and breast pathology, breast cancer genomics.



Shawn E. Cowper, MD, Professor of Dermatology. Clinical interests: nephrogenic systemic fibrosis, alopecia, informatics.



Sanja Dacic, MD, PhD, Professor of Pathology; Vice Chair and Director of Anatomic Pathology, Pathology. Clinical interests: thoracic pathology, molecular pathology.



Marcello DiStasio, MD, PhD, Assistant Professor of Pathology; Co-Director, Yale Legacy Tissue Donation Program, Pathology. Clinical interests: neurodegenerative, neuropsychiatric and retinal disorders.



Darin Dolezal, MD, PhD, Instructor. Clinical interests: cytopathology, metastasis biology, liquid biopsy development.



Susan F. Ely, MD, MPHTD, Associate Professor; Director of Autopsy Service. Clinical interests: autopsy pathology, forensic pathology/legal medicine.



Jeffrey Eskendri, DMD, Assistant Professor Adjunct in Pathology. Clinical interests: oral and maxillofacial pathology.



Karin Finberg, MD, PhD, Associate Professor of Pathology; Enrichment Core Director, Yale Cooperative Center of Excellence in Hematology; Associate Director, Molecular Genetic Pathology Fellowship Program; Associate Clinical Director, Tumor Profiling Laboratory; Co-Director, Yale Summer Enrichment Research Experience, Yale Center for Clinical Investigation (YCCI). Clinical interests: molecular diagnosis of inherited and acquired clinical disorders, disorders of iron metabolism.



Anjela Galan, MD, Associate Professor of Dermatology and Pathology; Associate Director, Dermatopathology Fellowship. Clinical interests: melanocytic skin neoplasms, soft tissue tumors, general neoplastic and non-neoplastic dermatopathology.



Peter Gershkovich, MD, MHA, Associate Professor of Clinical Pathology; Director, Section of Pathology Informatics and Cancer Data Science, Pathology. Clinical interests: clinical systems engineering, information visualization, DNA sequencing analysis, NLP full-text search of clinical data.



Joanna Gibson, MD, PhD, Associate Professor of Pathology; Director, Quality and Patient Safety, Pathology. Clinical interests: colorectal polyposis and carcinogenesis, inflammatory bowel disease, Barrett esophagus, liver disease and transplantation, gastrointestinal neuroendocrine tumors, tumor molecular profiling.



Earl Glusac, MD, Professor Adjunct; Director, Physician Associate Studies. Clinical interest: melanocytic tumors.



Pallavi Gopal, MD, PhD, Associate Professor of Pathology; Director, Neuropathology and Human Brain Discovery, Pathology; Director, Neuropathology Fellowship, Pathology. Clinical interests: neuropathology, neurodegenerative disease.



Robert Homer, MD, PhD, Professor of Pathology and of Medicine (Pulmonary); Director of Medical Studies, Anatomic Pathology. Clinical interests: thoracic pathology, immunopathology.



Won Jae Huh, MD, PhD, Assistant Professor of Pathology. Clinical interests: preneoplastic lesions in the stomach and liver.



Pei Hui, MD, PhD, Professor of Pathology and of Obstetrics, Gynecology & Reproductive Sciences; Director, Gynecologic Pathology; Clinical Director, Molecular Diagnostics Laboratories; Director, Pathology. Clinical interests: gynecologic pathology, general surgical pathology, molecular diagnostics.



Anita Huttner, MD, Associate Professor of Pathology. Clinical interests: neuropathology, molecular genetic pathology.



Dhanpat Jain, MD, Professor of Pathology and of Medicine (Digestive Diseases). Clinical interests: gastrointestinal and liver pathology, including liver tumors, gastrointestinal stromal tumors, prostate cancer risk and mortality, motility disorders of the bowel.



Mohamed Kahila, MBBCh, Assistant Professor. Clinical interests: breast pathology, molecular genetics pathology.



Samuel Katz, MD, PhD, Associate Professor of Pathology. Clinical interest: hematopathology.



David S. Klimstra, MD, Louis J. M. Zinterhofer, MD Professor of Pathology; Strategic Director, Digital Pathology and AI; Director, Expert Consultation Service, Pathology. Clinical interests: neoplastic diseases of the gastrointestinal and hepatopancreatobiliary tract.



Christine J. Ko, MD, Professor of Dermatology and Pathology. Clinical interests: cutaneous and adnexal neoplasms.



Uma Krishnamurti, MD, MBBS, PhD, Professor of Pathology and Director of Breast Pathology; Director of Breast Pathology, Pathology. Clinical interests: breast pathology, cytopathology, gynecologic pathology.



Deepika Kumar, MD, Assistant Professor of Pathology. Clinical interests: hematopathology, genitourinary pathology, renal pathology.



Alexander Ladenheim, MD, Assistant Professor of Pathology. Clinical interests: thyroid pathology, salivary gland pathology, and head & neck pathology.

Clinical Faculty



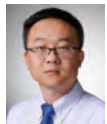
Angelique W. Levi, MD, Associate Professor of Pathology; Vice Chair of Operations and Director of Pathology Reference Services, Pathology; CLIA Laboratory Medical Director, Pathology; Affiliated Faculty, Yale Institute for Global Health. Clinical interests: Public health, COVID testing, gynecologic cytopathology, HPV-associated uterine cervical disease, urologic pathology, MRI-targeted prostate cancer.



Yuanxin Liang, MD, PhD, Assistant Professor of Pathology. Clinical interests: breast pathology, gastrointestinal pathology, general surgical pathology.



Chen Liu, MD, PhD, Anthony N. Brady Professor of Pathology; Chair, Pathology; Chief of Pathology, YNHH. Clinical interest: liver pathology.



Wenyi Luo, MD, PhD, Assistant Professor of Pathology. Clinical interest: GI pathology.



Declan McGuone, FRCPath Neuro, MBBCh, Associate Professor of Pathology. Clinical interests: neuropathy, forensic pathology, autopsy.



Jennifer Madison McNiff, MD, Professor of Dermatology and Pathology; Director, Yale Dermatopathology Laboratory; Section Chief, Dermatopathology. Clinical interests: cutaneous lymphomas and clinicopathologic correlations.



Christine Minerowicz, MD, Assistant Professor; Chair & CLIA Medical Director, Bridgeport and Milford Campus Laboratories, Pathology. Clinical interests: pulmonary pathology, neoplastic and interstitial lung disease.



Haris Mirza, MBBS, PhD, Assistant Professor of Pathology. Clinical interests: Haris Mirza, MBBS, PhD, Assistant Professor. Clinical interests: gastrointestinal and liver pathology.



Gilbert Moeckel, MD, PhD, FASN, Professor of Pathology; Director, Renal Pathology and Electron Microscopy Laboratory, Pathology; Director, Renal & Genitourinary Fellowship Program, Pathology. Clinical interests: renal pathology, progression of interstitial fibrosis, acute kidney cell injury, renal cell carcinoma microenvironment.



Raffaella Morotti, MD, Professor of Pathology and Pediatrics; Director, Pediatric Pathology, Pathology; Associate Director, Autopsy Service. Clinical interests: perinatal pathology, pathology of solid tumors (pediatric), pediatric liver disease.



Jon S. Morrow, MD, PhD, Raymond Yesner Professor of Pathology; Professor, MCD Biology. Clinical interests: hematologic and renal disorders.



Peggy Myung, MD, PhD, Associate Professor of Dermatology and of Pathology; Vice Chair of Research, Dermatology. Clinical interests: dermatopathology, clinical dermatology.



ILKe Nalbantoglu, MD, Associate Professor of Pathology. Clinical interests: gastrointestinal and liver pathology, pediatric pathology.



Gauri Panse, MD, Assistant Professor of Dermatology and Pathology. Clinical interests: dermatopathology and soft tissue pathology.



Vinita Parkash, MBBS, MPH, Senior Research Scientist in Public Health (Health Policy); Associate Clinical Professor of Pathology; Affiliated Faculty, Yale Institute for Global Health. Clinical interests: gynecologic pathology, clinical quality patient safety.



Sudhir Perincheri, MD, MBBS, PhD, Assistant Professor of Pathology; Director of Digital Pathology, Pathology. Clinical interests: hematopathology, renal pathology, GU pathology, digital pathology.



Manju Prasad, MBBS, MD, Professor Emeritus of Pathology; Director, Endocrine, Head & Neck Pathology Fellowship Program, Pathology; Director, Endocrine, Head and Neck Pathology, Pathology. Clinical interest: endocrine head and neck pathology.



David Rimm, MD, PhD, Anthony N. Brady Professor of Pathology and Professor of Medicine (Medical Oncology); Director, Yale Cancer Center Tissue Microarray Facility, Pathology; Director, Yale Pathology Tissue Services, Pathology; Director, Physician Scientist Training Program, Pathology Research. Clinical interests: immunohistochemistry and immunotherapy diagnostics.



Marie Robert, MD, Professor of Pathology and of Medicine (Digestive Diseases). Clinical interests: celiac disease, pancreas cancer, immune therapy related gastroenteritis and colitis, fatty liver disease, hepatocellular carcinoma.



Krsi Rozenova, MD, Assistant Professor. Clinical interests: hematopathology, molecular genetic pathology, including tumor profiling of solid tumors and hematologic malignancies.



Harry Sanchez, MD, Assistant Professor; Director, Yale Legacy Tissue Donation Program, Pathology. Clinical interests: autopsy pathology, quality management, microbiology, medical education, medical history.



Alexa Siddon, MD, Professor of Laboratory Medicine; Hematopathology Fellowship Director, Laboratory Medicine; Director, Molecular Diagnostics Laboratory, Laboratory Medicine; Director, Flow Cytometry, Laboratory Medicine; Associate Director, Hematology Laboratory, Laboratory Medicine. Clinical interests: molecular and laboratory diagnosis of lympho-proliferative disorders.



John H. Sinard, MD, PhD, Professor of Pathology and of Ophthalmology and Visual Science; Medical Director, Pathology Informatics, Pathology. Clinical interests: pathology informatics, ophthalmic pathology, autopsy, tumor pathology.



Kristin Stendahl, MD, Assistant Professor of Pathology and Laboratory Medicine. Clinical interests: cytopathology, laboratory medicine, particularly transfusion medicine.



Tong Sun, MD, PhD, Assistant Professor of Pathology. Clinical interests: cytopathology, molecular pathology, GU pathology.



Sumi Thomas, MBBS, Assistant Professor of Pathology; Director, Bridgeport Surgical Pathology Fellowship Program; Site Director, Yale Pathology Residency Program at Bridgeport Hospital. Clinical interests: anatomic pathology, cytopathology.



Zenta Walther, MD, PhD, Associate Professor of Pathology; Director, Molecular Genetic Pathology Fellowship Program. Clinical interests: molecular pathology of solid tumors, precision medicine.



Minhua Wang, PhD, MS, MBBS, Assistant Professor of Pathology; Education leader, Pathology; AP Beaker Subject Matter Expert for Cytopathology, Pathology; AP Beaker Subject Matter Expert for Gynecology, Pathology. Clinical interests: cytology, cytopathology.



Hao Wu, MD, PhD, Associate Professor of Pathology. Clinical interests: pediatric solid tumors, diseases of the gastrointestinal tract, diseases of the bone and soft tissue.



Mina Xu, MD, Professor of Pathology; Director of Hematopathology, Pathology; Director, Expert Consultation Practice, Pathology. Clinical interests: leukemia, lymphomas, myeloid neoplastic disorders.



Isil Yildiz, MD, MPH, Assistant Clinical Professor of Pathology; Affiliated Faculty, Yale Institute for Global Health. Clinical interests: cytopathology, ultrasound-guided fine needle aspiration, general surgical pathology.



Mingfu Yu, MD, MS, Assistant Professor of Pathology; Medical Director of Anatomic Pathology at Saint Raphael Campus. Clinical interest: general surgical pathology.



Sanhong Yu, MD, PhD, Assistant Professor. Clinical interests: cytopathology, head and neck pathology, soft tissue pathology and genitourinary pathology.



Vladislav Zakharov, MD, Assistant Professor. Clinical interests: GI pathology, cytopathology.



Haiying Zhan, MD, PhD, Assistant Professor of Pathology. Clinical interests: breast pathology, general pathology.



Xuchen Zhang, MD, PhD, Professor of Pathology; Director, Gastrointestinal & Liver Pathology; Director, Gastrointestinal & Liver Pathology Fellowship Program, Pathology. Clinical interests: gastrointestinal and liver pathology; thoracic pathology.



JANUARY

Cytopathology

The Cytopathology Service and Cytology Laboratory is staffed by 11 cytopathologists, 14 cytotechnologists, nine clinical/preparatory technologists, and five administrative staff members. The laboratory provides comprehensive services to the hospital and its clinicians and to several clinicians in the community as part of our outreach mission. All types of cytologic specimens are routinely received and processed, including gynecologic and non-gynecologic cytology, fine needle aspiration biopsy, and specimens from consultation services. The Cytopathology personnel participate fully in the teaching programs of the hospital and medical school. An active clinical research program is distributed among the team members.

OUR SERVICES

- World-recognized expertise in Cytopathology consultation and education
- Maintenance of excellent patient care activities, using the newest and most cost-effective technology available. In addition, new modes of ancillary testing for neoplasia detection, prognosis, and classification are being tested and added as appropriate
- Use of upgraded computerized-automated ThinPrep slide imaging system
- Performance and provision of rapid on-site interpretation of fine needle aspirations of palpable and non-palpable masses obtained under radiologic guidance.
- Development and incorporation of new and advanced diagnostic techniques in cytology specimen procurement and processing, and fostering an environment in which clinical, translational, and basic research can be successfully performed.

OUR TEAM

- Adebowale Adeniran, MD, Director
- Guoping Cai, MD, MS, Associate Director
- Rita Abi-Raad, MD
- Darin Dolezal, MD, PhD
- Uma Krishnamurti, MD, MBBS, PhD
- Angelique W. Levi, MD
- Kristin Stendahl, MD
- Tong Sun, MD, PhD
- Roxanne Wadia, MD
- Minhua Wang, MD, PhD, MS
- Sanhong Yu, MD, PhD



JANUARY 2026

DECEMBER

S	M	T	W	T	F	S
	1	2	3	4	5	6
7	8	9	10	11	12	13
14	15	16	17	18	19	20
21	22	23	24	25	26	27
28	29	30	31			

FEBRUARY

S	M	T	W	T	F	S
1	2	3	4	5	6	7
8	9	10	11	12	13	14
15	16	17	18	19	20	21
22	23	24	25	26	27	28

Sunday	Monday	Tuesday	Wednesday	Thursday	Friday	Saturday
28	29	30	31	1	2	3
4	5	6	7	8	9	10
11	12	13	14	15	16	17
18	19	20	21	22	23	24
25	26	27	28	29	30	31



FEBRUARY

Renal Pathology and Electron Microscopy

The Renal Pathology and Electron Microscopy Laboratory at Yale is world-renowned for accurate, timely, and personalized kidney biopsy and electron microscopy diagnostic services. The Lab offers light microscopy, immunofluorescence, and electron microscopy analysis on all kidney biopsy specimens and specialized testing for rare diseases such as Alport's syndrome, collagenous fibrillary nephropathy, amyloidosis, and monoclonal light chain-mediated diseases. We are bringing advanced technology (confocal IF, immune EM) to the practice of renal pathology to enhance diagnostic accuracy. We also provide electron microscopy analysis for viral diseases (Adeno virus, CMV, Polyoma virus), ciliary disease, tumors of unknown origin, and parasitic diseases. We provide clients within the United States and abroad with timely, accurate, and personalized diagnostic services. Our reports are accessible to international clients through the Yale RELAY online reporting system 24 hours a day. Dr. Moeckel has been the director of the Renal & EM Laboratory since 2008 and has expanded the Lab's national and international reputation as one of the leading diagnostic renal and EM pathology labs in the world.

OUR TEAM

Gilbert Moeckel, MD, PhD, FASN, FASIP, Director
Sudhir Perincheri, MD, PhD, MBBS



FEBRUARY 2026

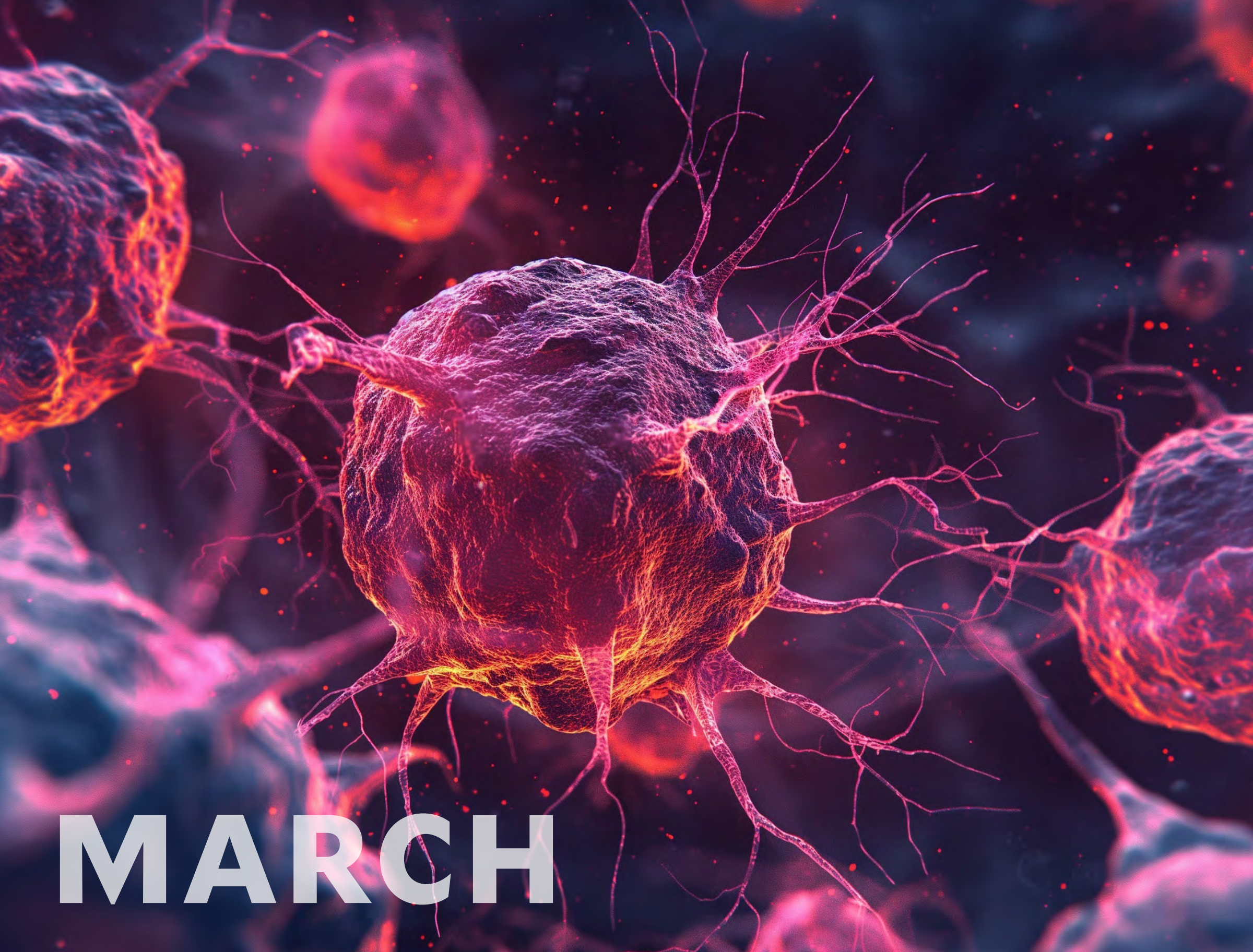
JANUARY

S	M	T	W	T	F	S
				1	2	3
4	5	6	7	8	9	10
11	12	13	14	15	16	17
18	19	20	21	22	23	24
25	26	27	28	29	30	31

MARCH

S	M	T	W	T	F	S
1	2	3	4	5	6	7
8	9	10	11	12	13	14
15	16	17	18	19	20	21
22	23	24	25	26	27	28
29	30	31				

Sunday	Monday	Tuesday	Wednesday	Thursday	Friday	Saturday
1	2	3	4	5	6	7
8	9	10	11	12	13	14
15	16	17	18	19	20	21
22	23	24	25	26	27	28



MARCH

Genitourinary Pathology

The Yale Program in Genitourinary Pathology provides nationally leading pathologic diagnostic expertise in genitourinary (GU) diseases, particularly prostate, kidney, bladder, and testis cancer. The GU Pathology director, Dr. Joshua Warrick, is an internationally recognized GU pathologist and researcher, especially known for his contributions to the field of bladder cancer. Our group of dedicated GU pathology subspecialists offers expert, in-depth histopathologic slide interpretations, state-of-the-art immunophenotyping, and access to Yale Pathology molecular genetic GU tumor profiling. We are engaged in GU translational cancer research, such as use of machine learning and artificial intelligence in prostate cancer diagnosis, grading, and prognostication using H&E-stained slides. Thus, Yale Genitourinary Pathology Services in Yale Pathology Labs will continue to lead in providing the best diagnosis, enhanced by innovative technological tools, for patients with diseases of the genitourinary system.

OUR TEAM

Joshua Warrick, MD, Director
 Adebowale Adeniran, MD
 Guoping Cai, MD, MS
 Deepika Kumar, MD
 Angelique W. Levi, MD
 Sudhir Perincheri, MD, PhD, MBBS



MARCH 2026

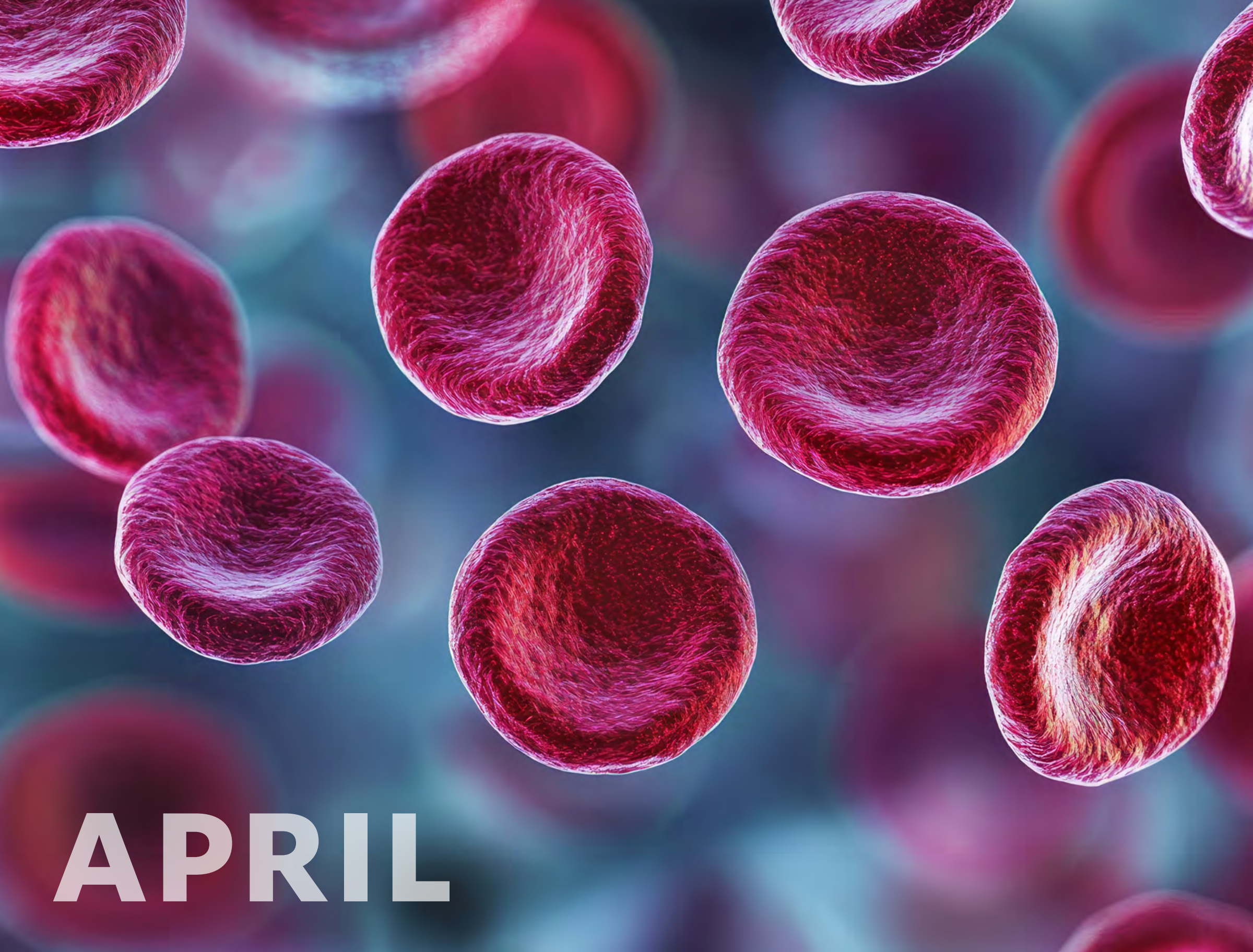
FEBRUARY

S	M	T	W	T	F	S
1	2	3	4	5	6	7
8	9	10	11	12	13	14
15	16	17	18	19	20	21
22	23	24	25	26	27	28

APRIL

S	M	T	W	T	F	S
			1	2	3	4
5	6	7	8	9	10	11
12	13	14	15	16	17	18
19	20	21	22	23	24	25
26	27	28	29	30		

Sunday	Monday	Tuesday	Wednesday	Thursday	Friday	Saturday
1	2	3	4	5	6	7
8	9	10	11	12	13	14
15	16	17	18	19	20	21
22	23	24	25	26	27	28
29	30	31	1	2	3	4



APRIL

Hematopathology

The Yale Hematopathology Program specializes in the evaluation of lymph nodes, bone marrow, blood, spleen, and hemolymphoid tissues in all organs. The strength of the service lies in the expertise of our hematopathology board-certified faculty. Our group receives external biopsy consultations and second opinion requests from across the nation and international sites for primary diagnoses as well as second opinions. Challenging cases are discussed at our regular consensus conferences. Yale hematopathologists are advancing the field with their research into predictive biomarkers, pathways of cell death, and novel/emerging tools that lead to precision diagnostics. Their strong collaboration with immunology, genetics, hematology, and oncology allows for promising new discoveries. The faculty regularly teach other subspecialists at national and international conferences.

Our average turnaround time for rush biopsies is less than 24 hours. Urgent results incorporating aspirate morphology, histology, flow cytometry, immunohistochemistry, FISH/cytogenetic, and state-of-the-art molecular studies, as necessary, are reported immediately to submitting physicians.

OUR TEAM

- Mina Xu, MD, Director
- Demetrios Braddock, MD, PhD
- Po-Han Chen, MD, PhD
- Samuel Katz, MD, PhD
- Deepika Kumar, MD
- Sudhir Perincheri, MD, PhD, MBBS
- Alexa Siddon, MD
- Krasi Rozenova, MD, PhD



APRIL 2026

MARCH

S	M	T	W	T	F	S
1	2	3	4	5	6	7
8	9	10	11	12	13	14
15	16	17	18	19	20	21
22	23	24	25	26	27	28
29	30	31				

MAY

S	M	T	W	T	F	S
					1	2
3	4	5	6	7	8	9
10	11	12	13	14	15	16
17	18	19	20	21	22	23
24	25	26	27	28	29	30
31						

Sunday	Monday	Tuesday	Wednesday	Thursday	Friday	Saturday
29	30	31	1	2	3	4
5	6	7	8	9	10	11
12	13	14	15	16	17	18
19	20	21	22	23	24	25
26	27	28	29	30	1	2



MAY

Thoracic Pathology

The Yale Thoracic Pathology Program offers comprehensive diagnostic services on biopsies and resections from the lung, mediastinum, and chest wall. Results of comprehensive examinations are rendered emphasizing prognosis and prediction of therapy response. We are engaged in thoracic cancer research looking at genomics and other predictors of response to cancer therapy. The team's expertise includes lung cancer, interstitial lung disease, mesothelioma, thymic lesions, and lung transplantation. In addition, our Thoracic Pathology Program provides comprehensive diagnostic expertise in the pathology of the heart and blood vessels, and our services include the most up-to-date classification of antibody and acute cellular rejection in adult and pediatric transplanted hearts. Our faculty members collaborate closely with cardiologists, cardiac surgeons, cardiovascular radiologists, and translational investigators.

OUR TEAM

- Sanja Dacic, MD, PhD, Director
- Guoping Cai, MD, MS
- Robert Homer, MD, PhD
- Christine Minerowicz, MD, BA



MAY 2026

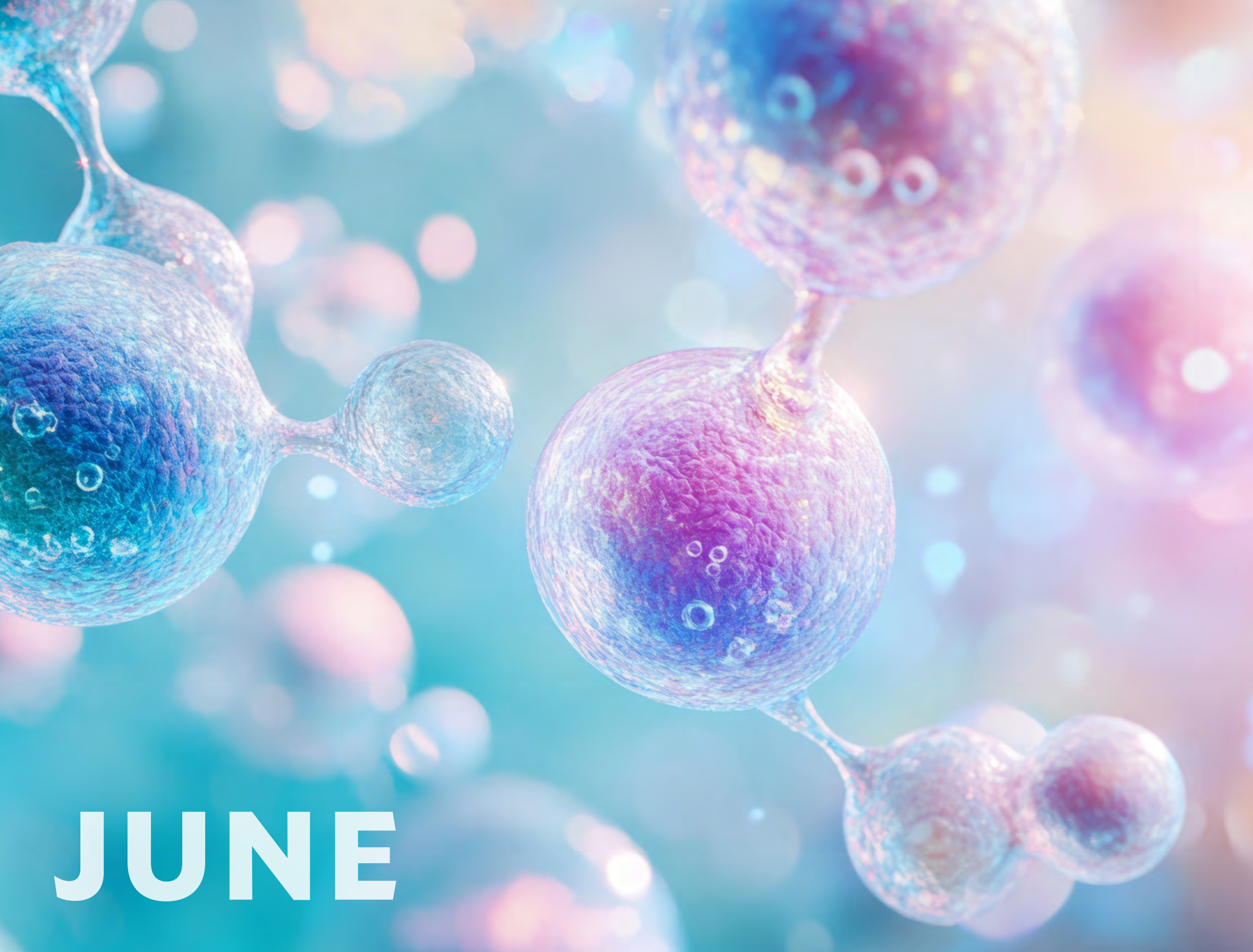
APRIL

S	M	T	W	T	F	S
			1	2	3	4
5	6	7	8	9	10	11
12	13	14	15	16	17	18
19	20	21	22	23	24	25
26	27	28	29	30		

JUNE

S	M	T	W	T	F	S
	1	2	3	4	5	6
7	8	9	10	11	12	13
14	15	16	17	18	19	20
21	22	23	24	25	26	27
28	29	30				

Sunday	Monday	Tuesday	Wednesday	Thursday	Friday	Saturday
26	27	28	29	30	1	2
3	4	5	6	7	8	9
10	11	12	13	14	15	16
17	18	19	20	21	22	23
24	25	26	27	28	29	30
31	1	2	3	4	5	6



JUNE

Endocrine, Head & Neck Pathology

The only one in Connecticut and one of a few in the U.S. and the world, the **Yale Endocrine, Head & Neck Pathology Program** specializes in tumors of the head and neck and of major endocrine glands (thyroid, parathyroids and adrenals). The subspecialty practice is staffed by board-certified pathologists including an oral pathologist and an ophthalmic pathologist. The program supports an ACGME-approved fellowship in endocrine, head, and neck pathology. The team supports the Smilow Cancer Hospital, a tertiary referral center that treats many complex cancers and rare diseases of the head, neck, and endocrine organs. We offer comprehensive diagnostic services for oral lesions, including jaw tumors and cysts, to the Yale Oral and Maxillofacial Surgery Program and several dental practices in Connecticut.

Our well-appointed immunohistochemistry and molecular laboratories help disease management through routinely offering tests for p16, PD-L1, high-risk HPV typing, and gene fusions on formalin-fixed paraffin-embedded tissue. The Program is led by a fellowship-trained pathologist who is available and readily accessible for second opinions and consultations.

OUR TEAM

Alexander Ladenheim, MD, Director
Jeffrey Eskendri, DMD
John Sinard, MD, PhD
Sanhong Yu, MD, PhD



JUNE 2026

MAY

S	M	T	W	T	F	S
					1	2
3	4	5	6	7	8	9
10	11	12	13	14	15	16
17	18	19	20	21	22	23
24	25	26	27	28	29	30
31						

JULY

S	M	T	W	T	F	S
				1	2	3
4	5	6	7	8	9	10
11	12	13	14	15	16	17
18	19	20	21	22	23	24
25	26	27	28	29	30	31

Sunday	Monday	Tuesday	Wednesday	Thursday	Friday	Saturday
31	1	2	3	4	5	6
7	8	9	10	11	12	13
14	15	16	17	18	19	20
21	22	23	24	25	26	27
28	29	30	1	2	3	4



JULY

Neuropathology

The Yale Neuropathology Service specializes in the evaluation of disorders involving brain, spinal cord, skeletal muscle, and peripheral nerve for adult and pediatric patients. All faculty members are subspecialty trained and board-certified in neuropathology. Aside from acute, intraoperative frozen section coverage, which is exclusively provided by board-certified neuropathologists, faculty members are also expert consultants for the postmortem assessment of neurological disorders. The Neuropathology Service aims to provide excellent clinical care while incorporating cutting-edge molecular technologies into daily practice for primary and consultation cases. Complex cases are discussed in detail among expert neuropathologists at weekly consensus conferences and ad hoc. All faculty members are involved nationally and internationally in professional societies and actively contribute to advancements in the field. The Program also offers a highly competitive ACGME-accredited two-year fellowship in neuropathology, which prepares for board certification in neuropathology and academic practice.

SERVICES AND EXPERTISE

The Yale Neuropathology Service provides diagnostic services to Yale New Haven Hospital and Yale's Smilow Cancer Hospital. In addition, the Yale Neuropathology Team provides expert diagnostic care for surrounding hospitals, including the Saint Raphael Campus in New Haven, Bridgeport Hospital, Greenwich Hospital, Milford Hospital, and Griffin Hospital. We also have an open-access brain donation program for patients and families who wish to support basic and translational research into causes and potential treatments for age-related neurologic diseases, the Center for Human Brain Discovery.

OUR TEAM

- Pallavi Gopal, MD, PhD, Director
- Marcello DiStasio, MD, PhD
- Anita Huttner, MD
- Declan McGuone, FRCPath Neuro, MBBCh



JULY 2026

JUNE

S	M	T	W	T	F	S
	1	2	3	4	5	6
7	8	9	10	11	12	13
14	15	16	17	18	19	20
21	22	23	24	25	26	27
28	29	30				

AUGUST

S	M	T	W	T	F	S
						1
2	3	4	5	6	7	8
9	10	11	12	13	14	15
16	17	18	19	20	21	22
23	24	25	26	27	28	29
30	31					

Sunday	Monday	Tuesday	Wednesday	Thursday	Friday	Saturday
28	29	30	1	2	3	4
5	6	7	8	9	10	11
12	13	14	15	16	17	18
19	20	21	22	23	24	25
26	27	28	29	30	31	1



AUGUST

Ophthalmic Pathology

The eye and its surrounding structures (eyelids, conjunctiva, cornea, orbit, globe) represent a unique portion of the human anatomy. Many of the diseases that affect this area are unique to the peri-ocular region or use a different terminology. Yale Pathology has responded to the unique needs of ophthalmologists by developing a subspecialty service in Ophthalmic Pathology. The Service receives specimens from the Yale Ophthalmology Clinic and from private ophthalmology offices throughout the state. **The Yale Ophthalmic Pathology Program** is also responsible for educating both the pathology residents and the ophthalmology residents in ophthalmic pathology.

LEADERSHIP

John Sinard, MD, PhD, Director

Immunohistochemistry Laboratory

The Yale Immunohistochemistry (IHC) Laboratory provides CAP/CLIA-certified high-quality state-of-the-art specialized revolutionary technologic services in immunohistochemistry, immunofluorescence, and in-situ hybridization. Immunohistochemistry plays a key role in diagnosis, prognosis, and therapeutics. We offer over 250 antibodies for the diagnostic work-up of various malignancies and infectious diseases. We maintain quality control systems that address technical issues related to staining and instrumentation to enhance laboratory-based quality of care for our patients. We use robust positive and negative controls, significantly reducing false negative and false positive results. Select multiplexed technologies are available that will allow two or more antibodies to be investigated simultaneously at different subcellular localizations. This has the added advantage of conserving critical tissue for potential molecular testing essential to patient care.

OUR TEAM

Wenyi Luo, MD PhD, Director

Xuchen Zhang, MD, PhD, Assistant Director



AUGUST 2026

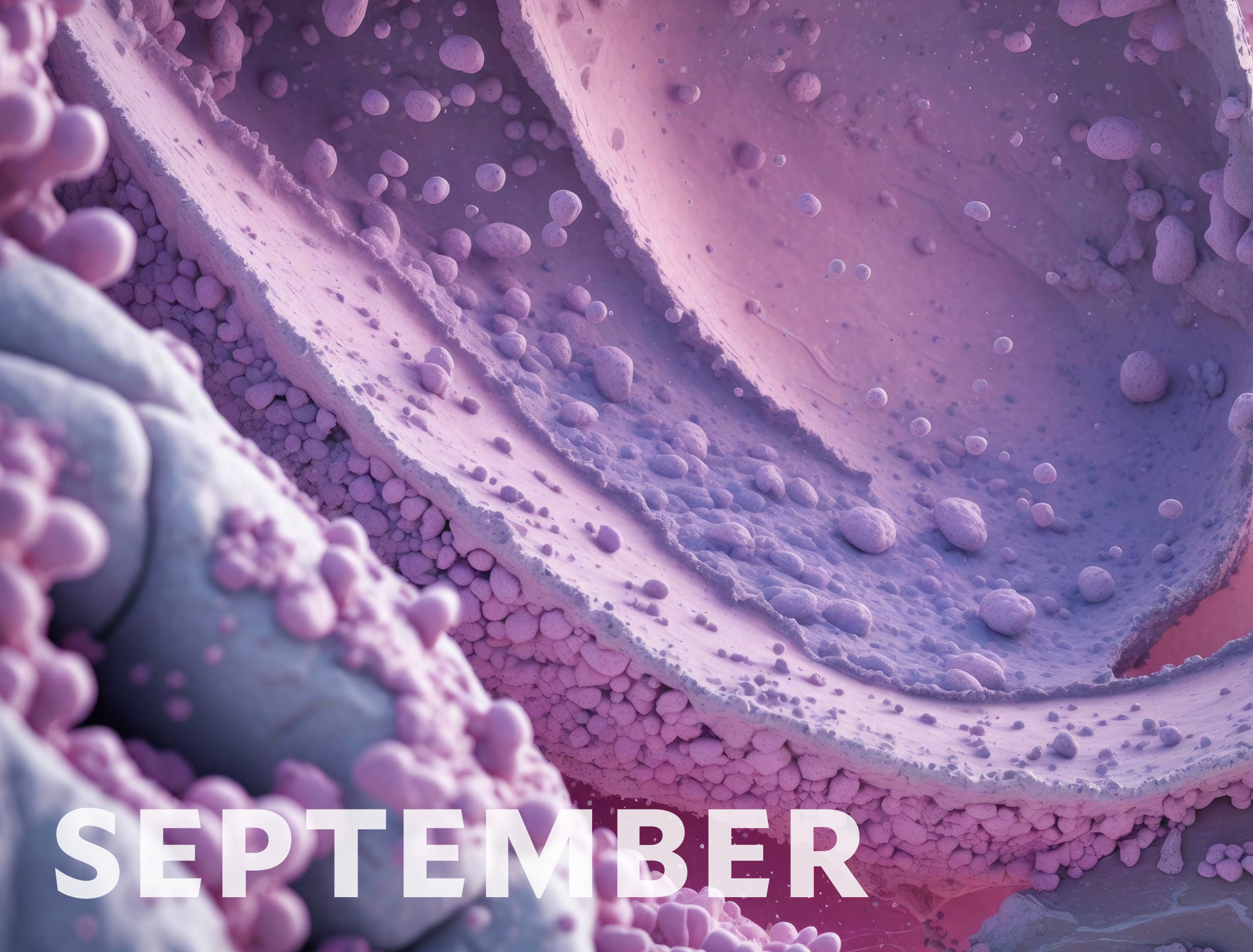
JULY

S	M	T	W	T	F	S
			1	2	3	4
5	6	7	8	9	10	11
12	13	14	15	16	17	18
19	20	21	22	23	24	25
26	27	28	29	30	31	

SEPTEMBER

S	M	T	W	T	F	S
				1	2	3
4	5	6	7	8	9	10
11	12	13	14	15	16	17
18	19	20	21	22	23	24
25	26	27	28	29	30	

Sunday	Monday	Tuesday	Wednesday	Thursday	Friday	Saturday
26	27	28	29	30	31	1
2	3	4	5	6	7	8
9	10	11	12	13	14	15
16	17	18	19	20	21	22
23	24	25	26	27	28	29
30	31	1	2	3	4	5



SEPTEMBER

Bone and Soft Tissue Pathology

The Yale Bone and Soft Tissue Pathology team is composed of surgical pathologists from the Yale-New Haven campus who have experience and interest in neoplastic and non-neoplastic diseases of the musculoskeletal system. We work in close alliance with the musculoskeletal radiology group to provide the best diagnostic service for all clinicians. We examine all biopsy and resection specimens using gross evaluation and light microscopic and immunohistochemical techniques. We also employ advanced methods to probe protein expression and genetic alterations harbored in the patient's pathologic tissues. The data resulting from examination of the specimens are interpreted in the context of the clinical presentation and the results of diagnostic imaging studies. For complex tumor cases, a weekly multidisciplinary Tumor Board is held to make informed decisions on treatment and follow-up of the patient. We also provide a yearly series of bone and soft tissue lectures to educate residents and fellows. Research efforts primarily involve retrospective clinicopathological correlations compiling and evaluating the experience at our institution.

OUR TEAM

Sumi Thomas, MBBS, Director
 Peter Podany, MD
 Harry Sanchez, MD
 Hoa Wu, MD, PhD
 Mingfu Yu, MD, MS

Pediatric and Perinatal Pathology

The Yale Pediatric Pathology Service provides diagnostic expertise for diseases occurring in the pediatric age range (0-21 years). In addition, the service covers perinatal pathology, with inclusion of evaluation for fetal malformations, complex congenital malformations, perinatal and pediatric autopsies, and placental pathology. Specific areas of interest also include pediatric liver diseases, pediatric gastrointestinal pathology, and tumors of pediatric age.

OUR TEAM

Raffaella Morotti, MD, Director
 Hao Wu, MD, PhD



SEPTEMBER 2026

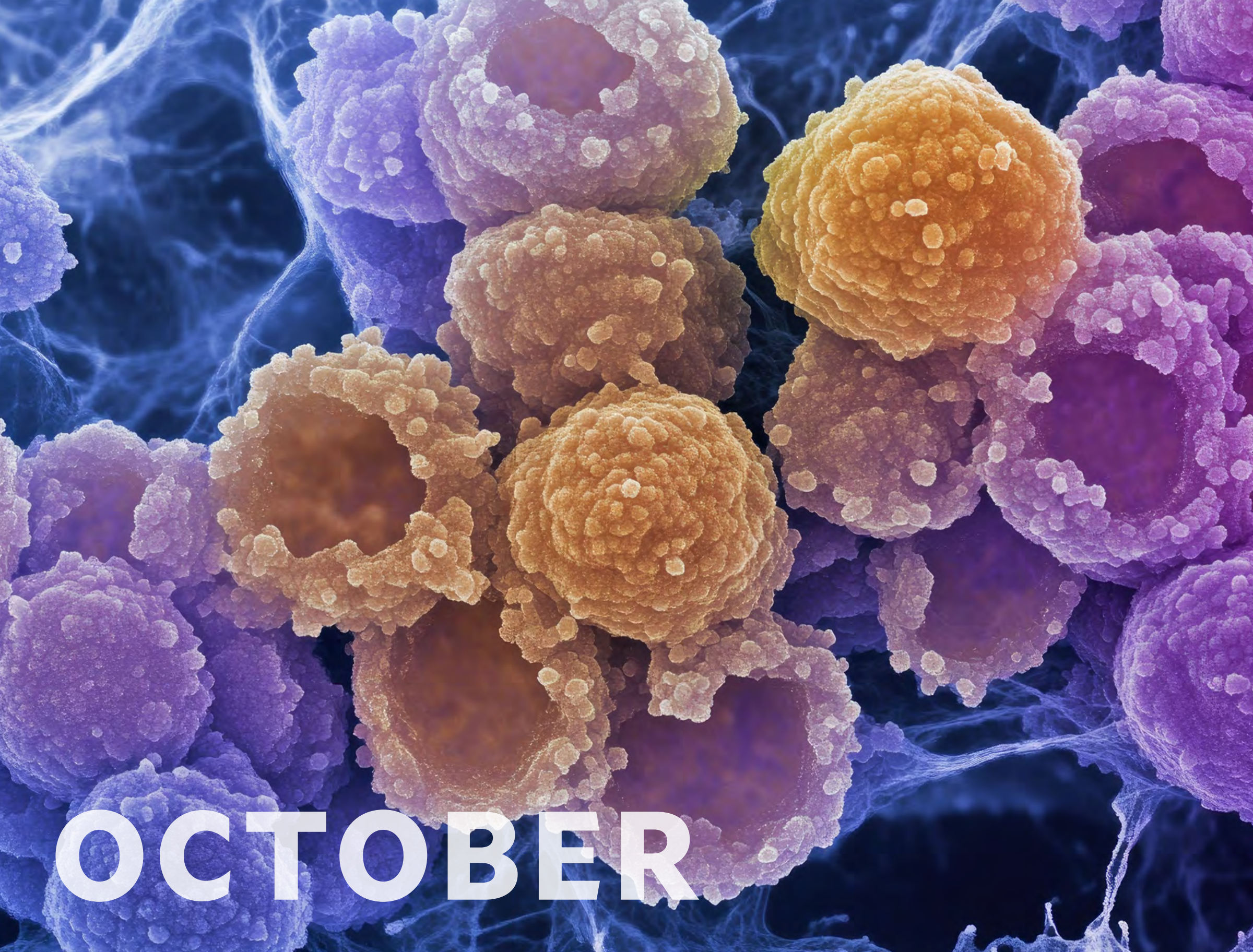
AUGUST

S	M	T	W	T	F	S
						1
2	3	4	5	6	7	8
9	10	11	12	13	14	15
16	17	18	19	20	21	22
23	24	25	26	27	28	29
30	31					

OCTOBER

S	M	T	W	T	F	S
					1	2
3	4	5	6	7	8	9
10	11	12	13	14	15	16
17	18	19	20	21	22	23
24	25	26	27	28	29	30
31						

Sunday	Monday	Tuesday	Wednesday	Thursday	Friday	Saturday
30	31	1	2	3	4	5
6	7	8	9	10	11	12
13	14	15	16	17	18	19
20	21	22	23	24	25	26
27	28	29	30	1	2	3



OCTOBER



Center of Excellence for Women's Health

The Yale Pathology Center of Excellence for Women's Health encompasses Gynecologic and Breast Pathology clinical diagnostic services across all hospitals in the Yale New Haven Health System. The Center helps foster collaborative relationships throughout and beyond Yale School of Medicine and YNH (Yale New Haven Hospital), focusing on the pursuit of excellence in academic Gynecologic and Breast Pathology.

LEADERSHIP

Natalia Buza, MD, Director

Breast Pathology

The Yale Breast Pathology Service focuses on precise diagnosis and providing reliable results. Board-certified pathologists with expertise in breast subspecialty interpret challenging breast cases daily. In addition to performing comprehensive studies and paying attention to detail to ensure accuracy, we review difficult diagnoses at daily consensus conferences where challenging cases are presented and discussed. Additionally, we perform necessary ancillary biomarker testing and facilitate molecular testing to aid in patient management. Faculty members are also actively engaged in collaborative translational research in breast pathology. Pathology team members are vital contributors to The Breast Center at Smilow Cancer Hospital, which is accredited by the National Accreditation Program for Breast Centers and was the first National Cancer Institute Comprehensive Cancer Center in the Northeast to hold this designation

OUR TEAM

- Uma Krishnamurti, MD, MBBS, PhD, Director
- Lorraine Colon Cartagena MD
- Mohamed Kahila, MBBCh
- Yuanxin Liang, MD
- Haiying Zhan, MD, PhD

SEPTEMBER

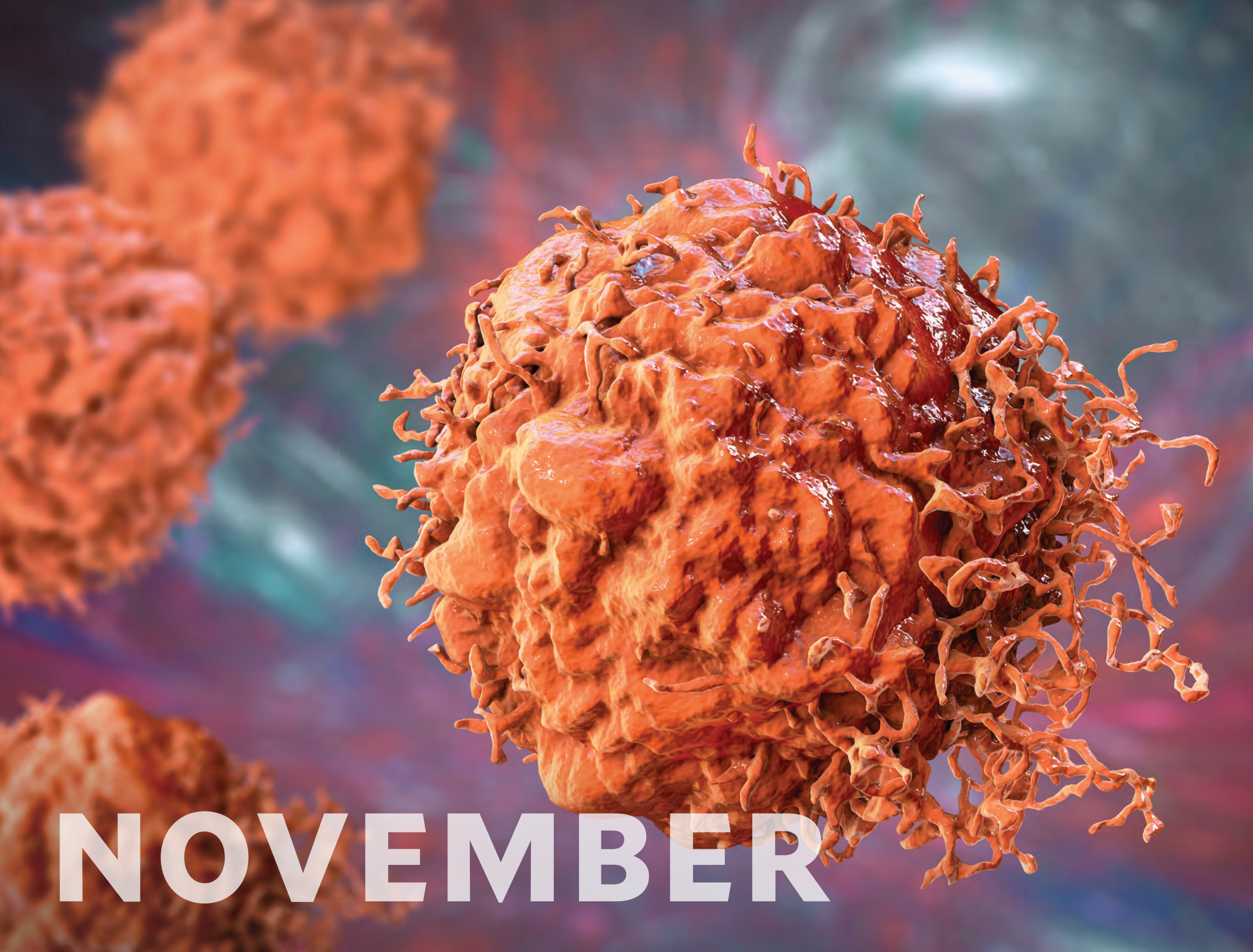
S	M	T	W	T	F	S
		1	2	3	4	5
6	7	8	9	10	11	12
13	14	15	16	17	18	19
20	21	22	23	24	25	26
27	28	29	30			

NOVEMBER

S	M	T	W	T	F	S
1	2	3	4	5	6	7
8	9	10	11	12	13	14
15	16	17	18	19	20	21
22	23	24	25	26	27	28
29	30					

OCTOBER 2026

Sunday	Monday	Tuesday	Wednesday	Thursday	Friday	Saturday
27	28	29	30	1	2	3
4	5	6	7	8	9	10
11	12	13	14	15	16	17
18	19	20	21	22	23	24
25	26	27	28	29	30	31



NOVEMBER

Gynecologic Pathology

Yale Gynecologic (GYN) Pathology Service enjoys a dynamic, high-volume subspecialty service with rigorous engagements in clinical service, translational research, and education. The Service benefits from the outstanding clinical materials afforded by Yale New Haven Hospital's world-class gynecologic oncology program. The in-house case material is supplemented by the unique and complex consult cases from all over the U.S. and around the world. This setting generates approximately 15,000 gynecological specimens annually. One of the long-term academic goals is to build an outstanding gynecological pathology program with emphasis on diagnostic tissue evaluation, oncological biomarker identification and clinical applications, and understanding the pathogenesis of various gynecological cancers. The academic environment of the GYN pathology program is highly dynamic and exciting. The faculty members are highly experienced and enjoy world-class reputations in diagnostic and investigative work in all aspects of gynecological pathology. Their expertise in the intraoperative frozen section consultation for gynecological tumors and diagnostic workup of trophoblastic disease is unparalleled. Senior faculty are responsible editors/authors for the 4th, 5th and upcoming 6th editions of The WHO Classifications of Tumors of Female Reproductive Organs in 2014, 2020 and 2026, respectively. The recently established "Center for Precision Medicine of Trophoblastic Disease" is dedicated to advancing precision medicine by leveraging the latest molecular discoveries and novel treatment options of gestational trophoblastic disease, a joint effort by the Department of Pathology and Department of Obstetrics, Gynecology & Reproductive sciences.

OUR TEAM

Pei Hui, MD, PhD, Director
Rita Abi-Raad, MD
Natalia Buza, MD
Uma Krishnamurti, MD
Vinita Parkash, MBBS, MPH
Sumi Thomas, MD
Tong Sun, MD, PhD
Minhua Wang, MD, PhD, MS



NOVEMBER 2026

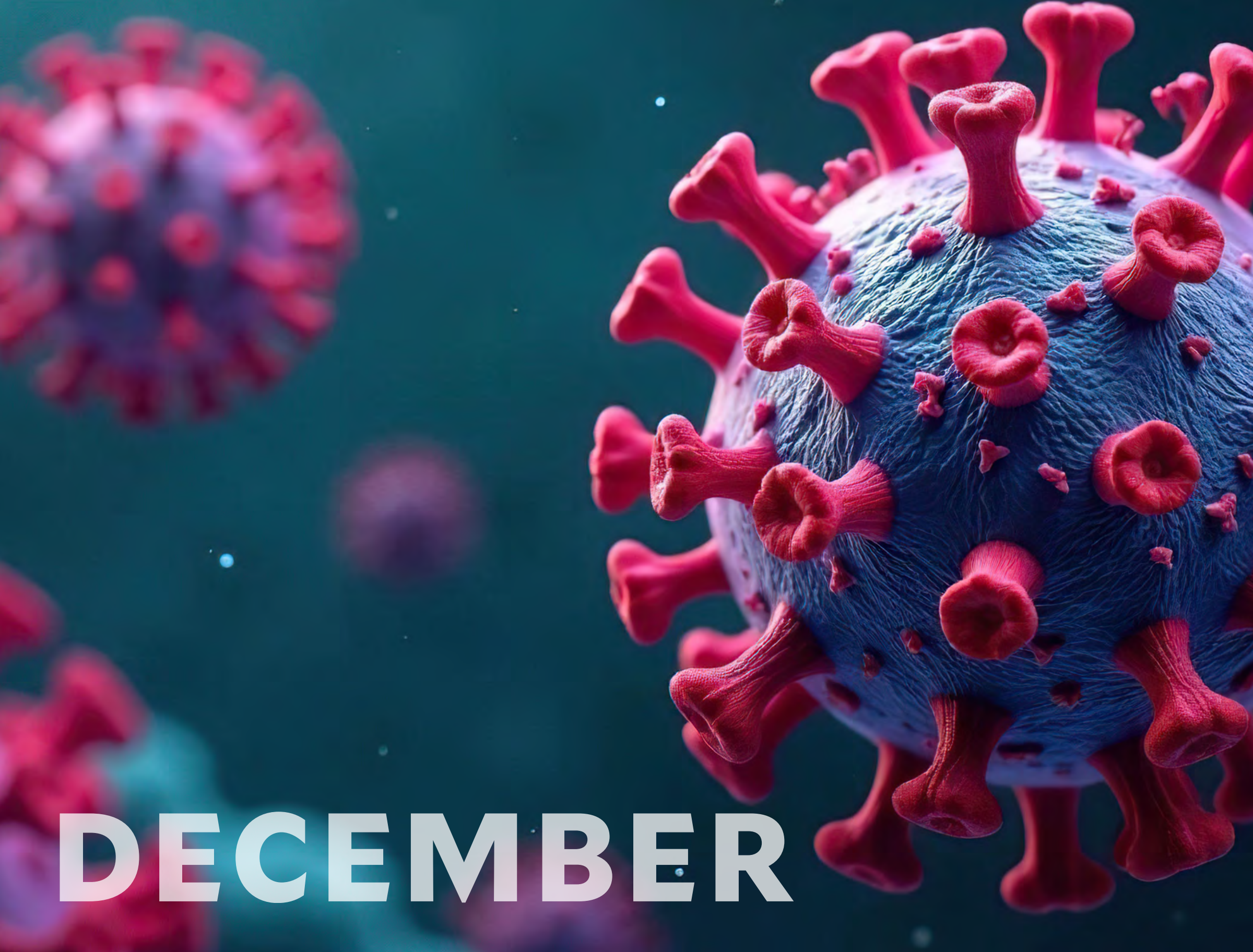
OCTOBER

S	M	T	W	T	F	S
				1	2	3
4	5	6	7	8	9	10
11	12	13	14	15	16	17
18	19	20	21	22	23	24
25	26	27	28	29	30	31

DECEMBER

S	M	T	W	T	F	S
		1	2	3	4	5
6	7	8	9	10	11	12
13	14	15	16	17	18	19
20	21	22	23	24	25	26
27	28	29	30	31		

Sunday	Monday	Tuesday	Wednesday	Thursday	Friday	Saturday
1	2	3	4	5	6	7
8	9	10	11	12	13	14
15	16	17	18	19	20	21
22	23	24	25	26	27	28
29	30	1	2	3	4	5



DECEMBER

Gastrointestinal and Liver Pathology

Gastrointestinal disorders range from common ailments such as acid reflux, colon polyps, and gallstones to chronic inflammatory diseases, infections and cancers of the colon, liver, and pancreas. **The Gastrointestinal Pathology Service at Yale** is composed of a team of nationally recognized specialists who are devoted to the accurate and timely diagnosis of diseases of the intestinal tract, liver, pancreas, gallbladder, and biliary system. We provide expert diagnostic services for biopsy and resection specimens, with an emphasis on complete, accurate, and rapid reporting. More than 80% of diagnostic biopsies are finalized within 24 hours. We analyze more than 25,000 specimens annually, with a high proportion of medically complex cases and oncologic diseases. We also provide consultation to clinical care providers, fostering the integrated management of patients. Our pathologists are actively engaged in innovative clinical and translational research and have a firm commitment to clinical and academic excellence and quality, patient-centered care. We serve as a referral center for consultations from other institutions regionally, nationally, and internationally. Our division is supported by state-of-the-art molecular diagnostics and immunohistochemistry laboratories, providing molecular profiling of tumors and genomic analysis, furthering the pursuit of personalized medicine

OUR TEAM

Xuchen Zhang, MD, PhD, Director
Andrea Barbieri, MD
Joanna Gibson, MD, PhD
Won Jae Huh, MD, PhD
Dhanpat Jain, MD
David Klimstra, MD
Yuanxin Liang, MD
Chen Liu, MD, PhD
Wenyi Luo, MD, PhD
Haris Mirza MD, PhD
ILKe Nalbantoglu, MD
Marie Robert, MD



DECEMBER 2026

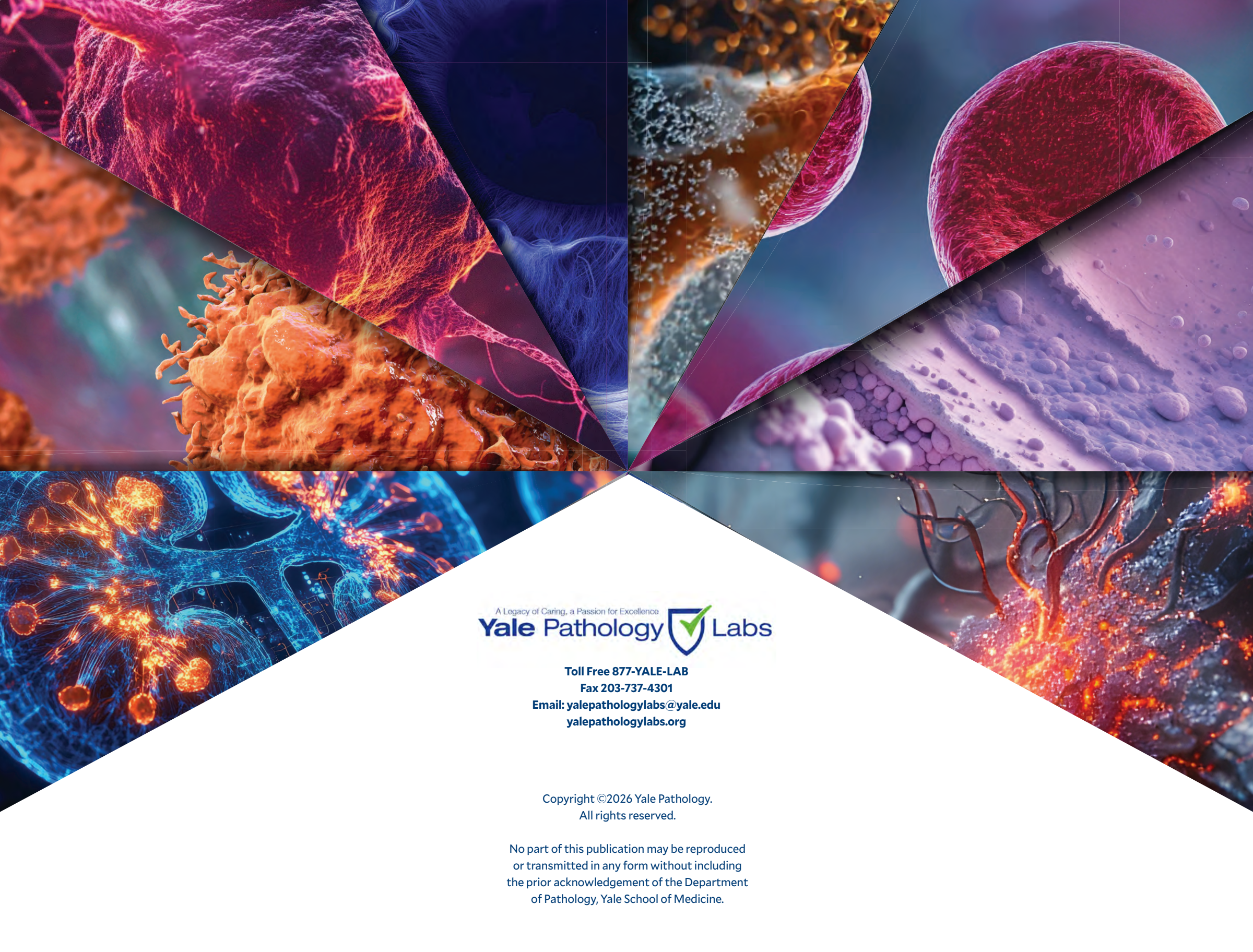
NOVEMBER

S	M	T	W	T	F	S
1	2	3	4	5	6	7
8	9	10	11	12	13	14
15	16	17	18	19	20	21
22	23	24	25	26	27	28
29	30					

JANUARY

S	M	T	W	T	F	S
						1 2
3	4	5	6	7	8	9
10	11	12	13	14	15	16
17	18	19	20	21	22	23
24	25	26	27	28	29	30
31						

Sunday	Monday	Tuesday	Wednesday	Thursday	Friday	Saturday
29	30	1	2	3	4	5
6	7	8	9	10	11	12
13	14	15	16	17	18	19
20	21	22	23	24	25	26
27	28	29	30	31	1	2



A Legacy of Caring, a Passion for Excellence
Yale Pathology Labs

Toll Free 877-YALE-LAB

Fax 203-737-4301

Email: yalepathologylabs@yale.edu

yalepathologylabs.org

Copyright ©2026 Yale Pathology.

All rights reserved.

No part of this publication may be reproduced
or transmitted in any form without including
the prior acknowledgement of the Department
of Pathology, Yale School of Medicine.